

TRAILER COMPONENTS

DISC BRAKES FOR
MARINE, RV, LIVESTOCK, & UTILITY TRAILERS

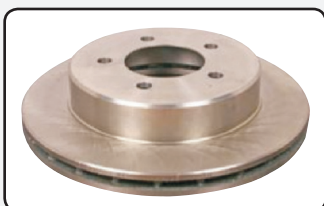
**PRODUCT
CATALOG**



DISC BRAKES FOR MARINE, RV, LIVESTOCK & UTILITY TRAILERS

- Disc Brakes From 2,000 Lb To 14,000 Lb
- Industry Leading Corrosion Protection
- First To Offer A Stainless Steel Brake Set
- Over 30 Years Leading The Trailer Industry

Corrosion Protection Options



Standard Auto Finish
offers the least protection

(i.e. during a standard salt spray test, rust will begin forming in less than 10 hours).



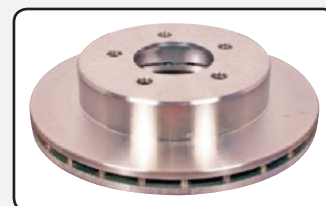
E-Coating
offers the best value of protection for over the road use and for fresh water marine (or limited salt water) applications. For 7K and above.

(i.e. during a standard salt spray test, rust will begin forming between 200-300 hours).



Dacromet Coating
offers the best value of protection for salt water applications.

(i.e. during a standard salt spray test, rust will begin forming between 300-400 hours).



All Stainless Steel
offers the ultimate corrosion protection in salt water marine applications

(i.e. *negligible* rust will form during a 1,000 hour standard salt spray test).

Kodiak rotors are offered with an automotive finish (as machined), E-Coated 7K and above, Dacromet, and Stainless Steel (Stainless Steel not available in integral hub/rotors).

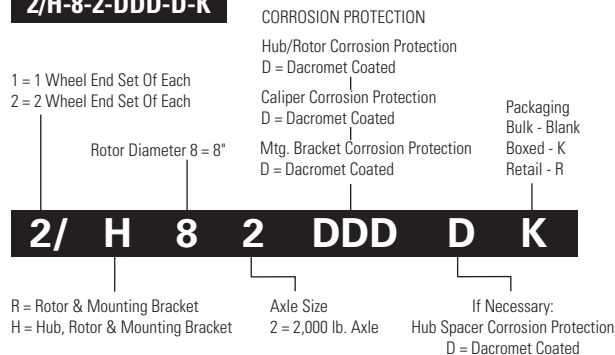
All Kodiak caliper castings and caliper mounting brackets have a dacromet coating or an all stainless steel product.

Note: On a stainless steel and KodaGuard caliper, all parts are stainless steel including the backing plate on the friction pads, and piston.

KodaGuard Corrosion Protection is available for calipers on 3,500-6,000lb axles.

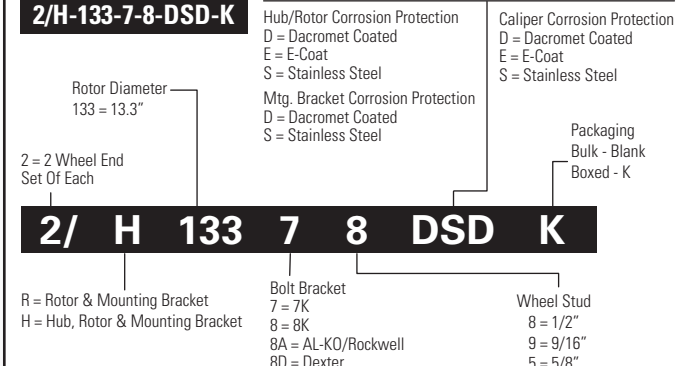
2,000 LB AXLES

2/H-8-2-DDD-D-K



7,000 - 8,000 LB AXLES

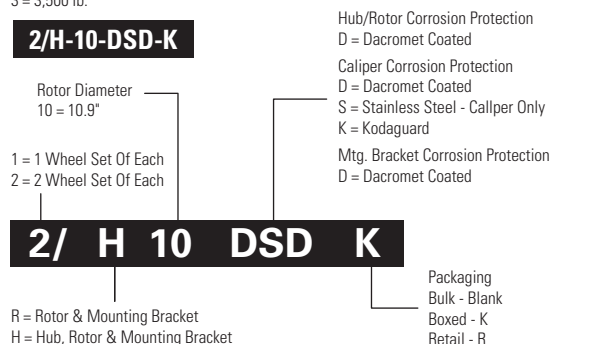
2/H-133-7-8-DS-D-K



3,500 - 6,000 LB AXLES

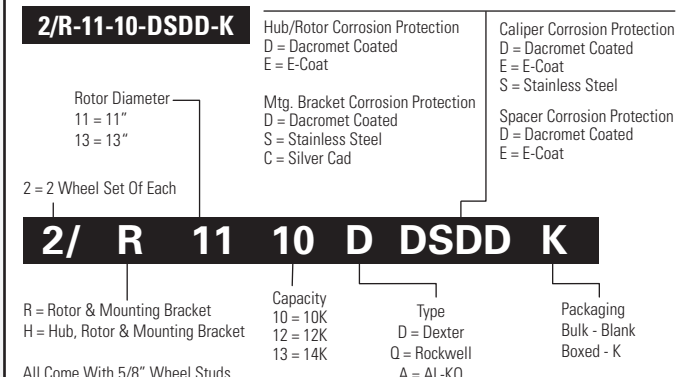
3 = 3,500 lb.

2/H-10-DS-D-K



10,000 - 14,000 LB AXLES

2/R-11-10-DSDD-K



Points to consider for Rotor Only:

(This type of rotor typically fits over a standard idler hub. Wheel studs are pressed into the hub only. The rotor is frequently wheel bolt piloted and is a loose fit on the hub. It is held in place by the wheel/wheel nuts.)

- Removal of the rotor can be accomplished with little effort once the wheel and caliper have been removed.
- If either the rotor or the hub require replacement, the good component can be retained and reinstalled, while the faulty component is replaced. With an integral (One Piece) rotor/hub, the complete unit must be replaced.
- Installation of an "over the hub" rotor effectively increases the overall hub face to hub face dimensions by approximately 1/2" thickness of rotor per axle.
- Wheel studs thread length may be a consideration when installing an "over the hub" rotor.
- Easy to convert an idler axle to a disc brake axle with an "over the hub" rotor.

Points to consider for integral (One Piece) Hub & Rotor:

(In this type, the rotor and hub are cast as a single unit. Wheel studs are pressed into the rotor. Bearing races are installed.)

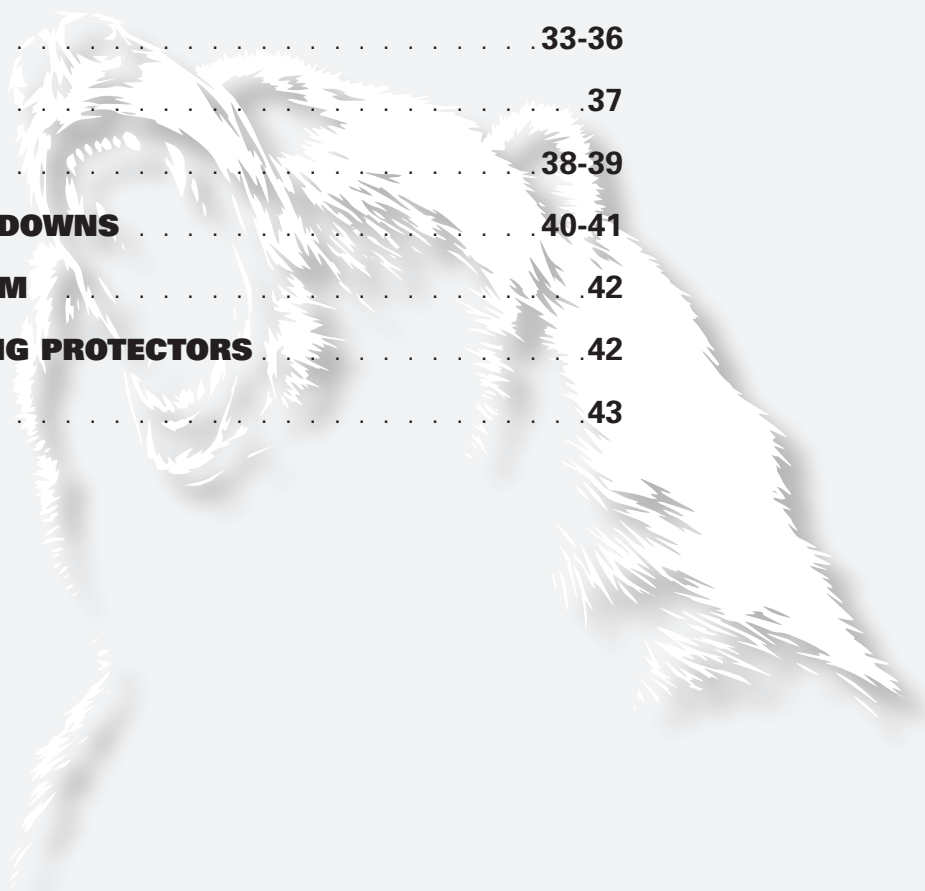
- Hub and rotor are machined together. This minimizes rotor runout.
- Hub and rotor are balanced as one unit, which offers a smoother ride.
- Ease of installation when retrofitting and/or upgrading from drum brakes.
- Bearings and Grease or oil seals not included.



KODIAK[®]

TRAILER COMPONENTS

2000 LB AXLES	5
3500 LB AXLES	5-8
5200 - 6000 LB AXLES	9-12
7000 - 7200 LB AXLES	13-18
8000 LB AXLES	19-26
10000 LB AXLES	27-32
12000 LB AXLE	33-36
14000 LB AXLE	37
BRAKE HOSES	38-39
CALIPER BREAKDOWNS	40-41
RETAIL PROGRAM	42
RED EYE BEARING PROTECTORS	42
WARRANTY	43

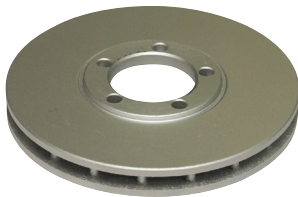


2000 LB

ROTOR SIZE & STYLE	BOLT PATTERN	BRAKE FLANGE	FITS SPINDLE	FITS AXLE	FITS WHEEL SIZE
8" Bolt On	5 on 4.5"	Bolt on	BT-16	All	10" or 13"

PART #	ROTOR	CALIPER	BRACKET
2/H-8-2-DDDD	RTR-8-2-D Dacromet	DBC-225-SB-D Dacromet	CMB-8-2B-D Dacromet

RTR-8-2-D



DBC-225-SB-D



2/H-8-2-DDDD



CMB-8-2B-D



2/H-8-3-DDDD-SB



H/S-BT16-D-S



Hub spacer for 2K, Fits BT-16 spindle

***Weld on version (P/N CMB-8-2W) is available as special order at the same price.
Call Customer Service For Details.

3500 LB

ROTOR SIZE & STYLE	BOLT PATTERN	BRAKE FLANGE	FITS SPINDLE	FITS AXLE	FITS WHEEL SIZE
8" Bolt on 10" Slip on	5 on 4.5"	4 Bolt	#84	All	10" or 13"

10" Or Larger Wheel

PART #	ROTOR	CALIPER	BRACKET	HUB/SPACER
2/H-8-3-DDDD-SB	RTR-8-3-D Dacromet	DBC-225-SB-D Dacromet	CMB-8-3B-D Dacromet	H/S-84-D-S Dacromet

RTR-8-3-D



DBC-225-SB-D



CMB-8-3B-D



H/S-84-D-S



13" Or Larger Wheel

PART #	ROTOR	CALIPER	BRACKET
2/R-10-DDD-SB	RTR-10-SB-D Dacromet	DBC-204-SB-D Dacromet	CMB-10-SB-D Dacromet

If spacer needed add CMB-10-SPCR

DBC-204-SB-D



CMB-10-SB-D



RTR-10-SB-D



2/R-10-DDD-SB



3500 LB (Continued on next page)

10" SLIP ON

ROTOR SIZE & STYLE	BOLT PATTERN	BRAKE FLANGE	FITS SPINDLE	FITS AXLE	FITS WHEEL SIZE
10" Slip On	5 on 4.5"	4 Bolt	#84	All	14" & Larger

PART #	ROTOR	CALIPER	BRACKET
2/R-10-DDD	RTR-10-D Dacromet	DBC-225-D Dacromet	CMB-10-U-D Dacromet
2/R-10-DKD	RTR-10-D Dacromet	DBC-225-KG KodaGuard	CMB-10-U-D Dacromet
2/R-10-SSS	RTR-10-SS Stainless Steel	DBC-225-SS Stainless Steel	CMB-10-U-SS Stainless Steel
2/R-10-DSD	RTR-10-D Stainless Steel	DBC-225-SS Stainless Steel	CMB-10-U-D Stainless Steel

2/R-10-DDD



2/R-10-DKD



2/R-10-SSS



2/R-10-DSD



10" INTEGRAL

ROTOR SIZE & STYLE	BOLT PATTERN	BRAKE FLANGE	FITS SPINDLE	FITS AXLE	FITS WHEEL SIZE	GREASE OR OIL
10" Integral	5 on 4.5" 1/2" studs	4 Bolt	#84	All	14" & Larger	Grease

Bearings, seals and brake flange mounting studs are not included with integral brake sets. Bearing races and wheel bolts are pressed in place and kit does contain 4 caliper mounting bolts with thread locker.

PART #	ROTOR/HUB	CALIPER	BRACKET
2/H-10-DKD	R/H-10-D-S Dacromet	DBC-225-KG KodaGuard	CMB-10I-D Dacromet
2/H-10-DDD	R/H-10-D-S Dacromet	DBC-225-D Dacromet	CMB-10I-D Dacromet
2/H-10-DSD	R/H-10-D-S Dacromet	DBC-225-SS Stainless Steel	CMB-10I-D Dacromet

2/H-10-DKD



2/H-10-DDD



2/H-10-DSD



SLIP ON ROTORS

Automotive quality casting. Rotors are 100% tested and balanced to meet very strict specifications. Our rotors are vented to improve heat dissipation. All gray iron rotors are 35,000 PSI tensile strength castings for longer rotor life, improved structural integrity and superior performance.

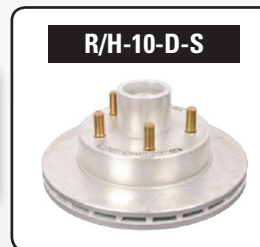
PART #	ROTOR SIZE	FINISH	FITS HUB
RTR-10-SS	10"	Stainless Steel	545
RTR-10-D	10"	Dacromet	545

- Rotor has 10.90" (276.90mm) O.D.
- Rotor has 6.681" (169.70mm) I.D.
- Contains (5) 0.531" (13.5mm) Dia Holes Equally Spaced
- Rotor has 4.50" Bolt Circle Dia.
- Min. Thickness = 21.6 mm



INTEGRAL ROTORS

PART #	BOLT PATTERN	WHEEL BOLTS	BEARING CUPS	FINISH
R/H-10-D-S	5 on 4.5"	1/2"	L68111 L44610	Dacromet



STAINLESS STEEL HUBS

Rustproof stainless steel hubs are ideal for extended marine use.

PART #	FITS	SPINDLE	BOLT PATTERN	DESCRIPTION
H-84545-SS-S	3,500 lb axles	#84	5 on 4.5	Can be used on idler axles or can be paired with a 10" slip-on rotor for disc brake applications. Cupped with bearing races and 1/2 inch wheel studs.



BEARING, RACE AND SEAL REPLACEMENT FOR 10" INTEGRAL ROTOR/HUB

BEARINGS & RACE

INNER BEARINGS 3500 LB			
BEARING #	RACE #	BEARING I.D.	BEARING O.D.
L-68149	L-68111	1.3775"	2.3612"
OUTER BEARINGS 3500 LB			
L-44649	L-44610	1.0625"	1.980"

SEAL

Fits 1.72" Spindle Diameter

PART #
171255TB

LUG NUTS - STAINLESS STEEL

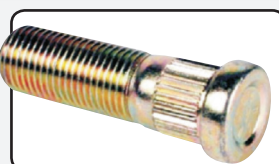
PART #	DESCRIPTION
ALN-1375-SS	Fits 1/2" diameter wheel bolts and is constructed of sturdy stainless steel for superior durability and corrosion resistance. Standard 60° cone fits tightly against the 60-degree taper of your wheel.



WHEEL STUD

PART #	LENGTH	THREAD	KNURL DIA.
R/H-LB-1.69	1.69"	1/2-20 UNF-2A	.545

Fits all R/H-10

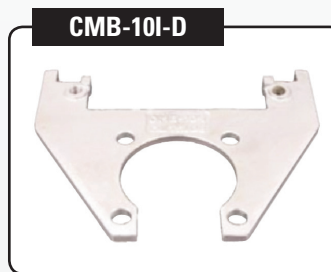
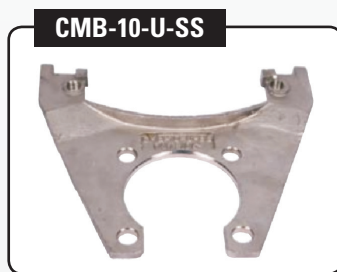
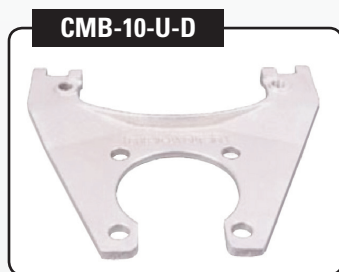


CALIPER MOUNTING BRACKETS

Kodiak caliper mounting brackets are a durable heavy duty casting of ductile iron or stainless steel. They utilize an embossment in the design to give more thread contact for the caliper guide bolts to insure a tight fitting and secure connection. All Kodiak brackets have side support, therefore the bracket carries the load not the guide bolts.

CALIPER MOUNTING BRACKETS

PART #	FOR ROTOR SIZE	FIT	FINISH
CMB-10-U-D	10"	Slip on	Dacromet
CMB-10-U-SS	10"	Slip on	Stainless Steel
CMB-10I-D	10" Rotor/hub (Integral)		Dacromet



3500 LB AXLE CALIPER OPTIONS

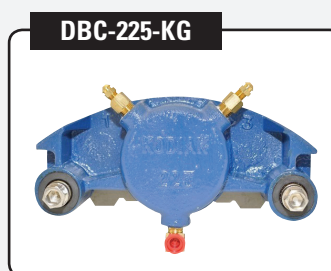
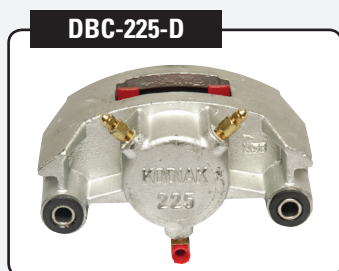
All Kodiak calipers are of low drag design. This retracts the piston further than the competition, which equates to a cooler running brake. 100% low pressure tested. Contains 2 special bolts with Thread Locker (use socket or allen wrench), dual port bleed screw, 2-1/4" stainless steel piston (Largest in the Industry) & ceramic pads.

3500 Lb Axle Caliper Parts Breakdown: See Page 42

DISC BRAKE CALIPERS

Fits 3500-6000lb axles

PART #	DESCRIPTION	FINISH
DBC-225-D	2-1/4" (Stainless Steel) piston. Loaded Standard with ceramic friction pads.	Dacromet
DBC-225-SS	2-1/4" (Stainless Steel) piston. Loaded Standard with stainless steel Backed friction pads.	Stainless Steel
DBC-225-KG	2-1/4" (Stainless Steel) piston. Loaded Standard with stainless steel Backed friction pads.	KodaGuard



STAINLESS STEEL BACKED CERAMIC FRICTION PADS.



Available Boxed:
DBC-225-PAD-K and DBC-225-PAD-SS-K



A KODIAK EXCLUSIVE!

At Kodiak we take pride in serving our customers and take the time to listen to their needs. Kodaguard is a Kodiak exclusive corrosion protection option that resulted from the need to bridge the gap between our dacromet coating and stainless steel options. Our Kodaguard coating is available on calipers for 3,500-6,000lb axles. This offers an improved protection, while providing a competitively priced solution that our customers appreciate.

For more information regarding this and other corrosion protection options, please contact Kodiak or visit us online at www.kodiaktrailer.com

5200-6000 LB AXLES

ROTOR SIZE & STYLE	BOLT PATTERN	BRAKE FLANGE	FITS SPINDLE	FITS AXLE	FITS WHEEL SIZE
12" Slip on	6 on 5.5"	5 Bolt	#42	All	15" & Larger

Contains 4 Caliper Mounting Bolts with Thread Locker

PART#	ROTOR	CALIPER	BRACKET
2/R-12-DDD	RTR-12-D Dacromet	DBC-225-D Dacromet	CMB-12-U-D Dacromet
2/R-12-DKD	RTR-12-D Dacromet	DBC-225-KG KodaGuard	CMB-12-U-D Dacromet
2/R-12-SSS	RTR-12-SS Stainless Steel	DBC-225-SS Stainless Steel	CMB-12-U-SS Stainless Steel
2/R-12-DSD-SB	RTR-12-D Dacromet	DBC-225-SS Stainless Steel	CMB-12-SB-R-D CMB-12-SB-L-D Dacromet
2/R-12-DDD-SB	RTR-12-D Dacromet	DBC-225-D Dacromet	CMB-12-SB-R-D CMB-12-SB-L-D Dacromet
2/R-12-DSD	RTR-12-D Dacromet	DBC-225-SS Stainless Steel	CMB-12-U-D Dacromet
2/R-12-DKD-SB	RTR-12-D Dacromet	DBC-225-KG Dacromet	CMB-12-SB-R-D CMB-12-SB-L-D Dacromet

2/R-12-DDD



2/R-12-DKD



2/R-12-SSS



2/R-12-DSD



2/R-12-DDD-SB



Horseshoe Brackets
Install without removing idler hub!
SURGE BRAKE APPLICATIONS ONLY

5200-6000 LB

12" INTEGRAL

ROTOR SIZE & STYLE	BOLT PATTERN	BRAKE FLANGE	FITS SPINDLE	FITS AXLE	FITS WHEEL SIZE	GREASE OR OIL
12" Integral	6 on 5.5" 1/2" studs	5 Bolt	#42	All	15" & Larger	Grease or Oil

Bearings, seals and brake flange mounting bolts are NOT included with Integral brake sets. Bearing races and wheel studs are pressed in place and kit does contain 4 caliper mounting bolts with thread locker.

PART #	ROTOR/HUB	CALIPER	BRACKET
2/H-12-DDD	R/H-12-D-S Dacromet	DBC-225-D Dacromet	CMB-12-U-D Dacromet
2/H-12-DKD	R/H-12-D-S Dacromet	DBC-225-KG KodaGuard	CMB-12-U-D Dacromet
2/H-12-DSD	R/H-12-D-S Dacromet	DBC-225-SS Stainless Steel	CMB-12-U-D Dacromet

2/H-12-DDD



2/H-12-DKD



2/H-12-DSD



ROTORS FOR 5200-6000 LB AXLES

Automotive quality casting. Rotors are 100% tested and balanced to meet very strict specifications. Our rotors are vented to improve heat dissipation. All gray iron rotors are 35,000 PSI tensile strength castings for longer rotor life, improved structural integrity and superior performance.

PART #	ROTOR SIZE	FINISH	FITS HUB
RTR-12-SS	12"	Stainless Steel	655
RTR-12-D	12"	Dacromet	655

RTR-12-D

RTR-12-SS

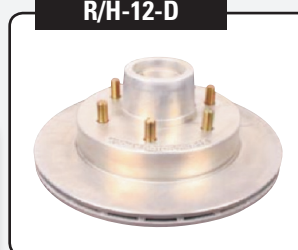


- Rotor has 12.160" (308.90mm) O.D.
- Rotor has 7.650" (194.30mm) I.D.
- Contains (6) 0.531" (13.5mm) Dia. Holes Equally Spaced
- Rotor has 5.50" Bolt Circle Diameter
- Min. Thickness 21.6 mm

Automotive quality casting. Rotors are 100% tested and balanced to meet very strict specifications. Our Rotors are vented to improve heat dissipation. All gray iron rotors are 35,000 PSI tensile strength castings for longer rotor life, improved structural integrity and superior performance.

PART #	BOLT PATTERN	WHEEL BOLTS	BEARING CUPS	FINISH
R/H-12-D-S	6 on 5.5"	1/2"	25520 15245	Dacromet

R/H-12-D



(Continued on next page)

(Rotors Continued)

STAINLESS STEEL HUBS

Rustproof stainless steel hubs are ideal for extended marine use.

PART #	FITS	SPINDLE	BOLT PATTERN
H-42655-SS-S	5200/6000 lb Axles	#42	6 on 5.5"
DESCRIPTION			
Can be used on idler axles or can be paired with a 12" slip-on rotor for disc brake applications. Cupped with bearing races and 1/2 inch wheel studs.			

H-42655-SS-S



BEARING, RACE, AND SEAL REPLACEMENT FOR 12" INTEGRAL ROTOR/HUB

BEARINGS & RACE

INNER BEARINGS 5200 LB - 6000 LB			
BEARING #	RACE #	BEARING I.D.	RACE O.D.
25580	25520	1.75"	3.265"
OUTER BEARINGS 3500 LB			
15123	15245	1.25"	2.409"

SEAL

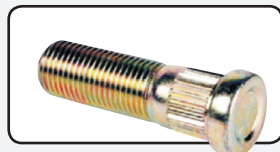
Fits 2.25" Spindle Diameter

PART #
22333TBN

WHEEL STUD

PART #	LENGTH	THREAD	KNURL DIA.
R/H-LB-1.69	1.69"	1/2-20 UNF-2A	.545

Fits all R/H-12



LUG NUTS - STAINLESS STEEL

PART #	DESCRIPTION
ALN-1375-SS	Fits 1/2" diameter wheel studs and is constructed of sturdy stainless steel for superior durability and corrosion resistance. Standard 60° cone fits tightly against the 60° taper of your wheel.

ALN-1375-SS



5200-6000 LB AXLE CALIPER MOUNTING BRACKETS

Kodiak caliper mounting brackets are a durable heavy duty casting of ductile iron or stainless steel. They utilize an embossment in the design to give more thread contact for the caliper guide bolts to insure a tight fitting and secure connection. All Kodiak brackets have side support; therefore, the bracket carries the load not the guide bolts.

CALIPER MOUNTING BRACKETS

PART #	FOR ROTOR SIZE	FIT	FINISH
CMB-12-U-D	12" & Rotor/Hub (Integral)	Universal	Dacromet
CMB-12-U-SS	12" & Rotor/Hub (Integral)	Universal	Stainless Steel
CMB-12-SB-R-D	12"	Right	Dacromet
CMB-12-SB-L-D	12"	Left	Dacromet

CMB-12-U-D



CMB-12-U-SS



CMB-12-SB-D



Surge Brake
Applications Only

Horseshoe Brackets
Install without removing idler hub!

5200-6000 LB AXLE CALIPER OPTIONS

All Kodiak calipers are of low drag design. This retracts the piston further than the competition, which equates to a cooler running brake. 100% low pressure tested. Contains 2 special bolts with Thread Locker (use socket or allen wrench), dual port bleed screw, 2-1/4" stainless steel piston (Largest in the Industry) & ceramic pads.

DISC BRAKE CALIPERS

Fits 3500-6000lb axles

PART #	DESCRIPTION	FINISH
DBC-225-D	2-1/4" (Stainless Steel) piston. Loaded standard with ceramic friction pads.	Dacromet
DBC-225-SS	2-1/4" (Stainless Steel) piston. Loaded Standard with stainless steel Backed friction pads.	Stainless Steel
DBC-225-KG	2-1/4" (Stainless Steel) piston. Loaded Standard with stainless steel Backed friction pads.	KodaGuard

5200-6000 LB Axle Caliper Parts Breakdown: See Page 42

DBC-225-D



DBC-225-SS



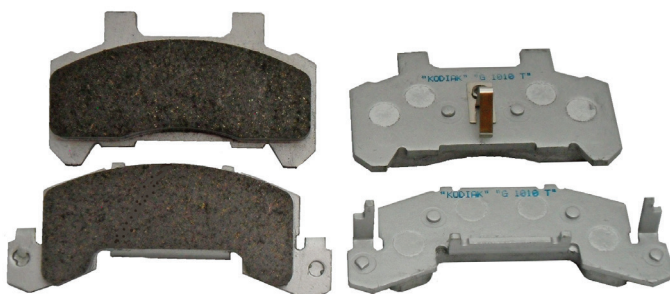
DBC-225-KG



* Also available with nitrile components for hydraulic fluid. Call Kodiak for details.

STAINLESS STEEL BACKED CERAMIC FRICTION PADS.

DBC-225-PAD-SS



Available Boxed:
DBC-225-PAD-K and DBC-225-PAD-SS-K

KODIAK was the first to offer stainless steel backed ceramic pads in the industry!
Stainless Steel is the best available corrosion resistant material...ideal for all saltwater applications.

ROTOR SIZE & STYLE	BOLT PATTERN	BRAKE FLANGE	FITS SPINDLE	FITS AXLE	FITS WHEEL SIZE
13" Slip on	8 on 6.5"	5 Bolt	#42	All	16" & Larger

Contains 4 Caliper Mounting Bolts with Thread Locker

Note: On air ride suspensions, Kodiak recommends clocking calipers as close to the lowest amplitude point as possible on the wheel end assembly.

PART #	ROTOR	CALIPER	BRACKET
2/R-133-7-8-REE	RTR-133-7-8 Standard Auto	DBC-250-E E-Coat	CMB-133-7-E E-Coat
2/R-133-7-8-DDD	RTR-133-7-8-D Dacromet	DBC-250-D Dacromet	CMB-133-7-D Dacromet
2/R-133-7-8-EEE	RTR-133-7-8-E E-Coat	DBC-250-E E-Coat	CMB-133-7-E E-Coat
2/R-133-7-8-DSD	RTR-133-7-8-D Dacromet	DBC-250-SS Stainless Steel	CMB-133-7-D Dacromet
2/R-133-7-8-SSS	RTR-133-7-8-SS Stainless Steel	DBC-250-SS Stainless Steel	CMB-133-7-SS Stainless Steel

2/R-133-7-8-REE



2/R-133-7-8-DDD



2/R-133-7-8-SSS



1/2" WHEEL STUDS

2/R-133-7-8-EEE



2/R-133-7-8-DSD



A KODIAK exclusive with a 6 year warranty. The FIRST all stainless steel! KODIAK was the first to offer a complete all stainless steel disc brake set in the industry! Stainless steel is the best available corrosion resistant material...Ideal for all saltwater applications.

14 7000 LB AXLES



7000 LB

ROTOR SIZE & STYLE	BOLT PATTERN	BRAKE FLANGE	FITS SPINDLE	FITS AXLE	FITS WHEEL SIZE
13" Slip On	8 on 6.5" 9/16" or 1/2" studs	5 Bolt	#42	All	16" & Larger

Contains 4 Caliper Mounting Bolts with Thread Locker

Note: On air ride suspensions, Kodiak recommends clocking calipers as close to the lowest amplitude point as possible on the wheel end assembly.

PART #	ROTOR	CALIPER	BRACKET
2/R-133-7-9-REE	RTR-133-8-9 Standard Auto	DBC-250-E E-Coat	CMB-133-7-E E-Coat
2/R-133-7-9-EEE	RTR-133-8-9-E E-Coat	DBC-250-E E-Coat	CMB-133-7-E E-Coat
2/R-133-7-9-DDD	RTR-133-8-9-D Dacromet	DBC-250-D Dacromet	CMB-133-7-D Dacromet
2/R-133-7-9-DSD	RTR-133-8-9-D Dacromet	DBC-250-SS Stainless Steel	CMB-133-7-D Dacromet
2/R-133-7-9-SSS	RTR-133-8-9-SS Stainless Steel	DBC-250-SS Stainless Steel	CMB-133-7-SS Stainless Steel

2/R-133-7-9-REE



9/16" WHEEL STUDS

- 5/8" Wheel Bolt size available
contact kodiak for inquiries

2/R-133-7-9-EEE



2/R-133-7-9-DDD



2/R-133-7-9-SSS



2/R-133-7-9-DSD



A KODIAK Exclusive with a 6 year warranty. The FIRST all stainless steel! KODIAK was the first to offer a complete all stainless steel disc brake set in the industry! Stainless steel is the best available corrosion resistant material...Ideal for all saltwater applications.

13" INTEGRAL

ROTOR SIZE & STYLE	BOLT PATTERN	BRAKE FLANGE	FITS SPINDLE	FITS AXLE	FITS WHEEL SIZE	GREASE OR OIL
13" Integral	8 on 6.5" 1/2" studs 9/16" studs	5 Bolt	#42	All	16" & Larger	Grease or Oil

Bearings, seals, and brake flange mounting bolts are NOT included with Integral brake sets. Bearing races, and wheel studs are pressed in place and kit does contain 4 caliper mounting bolts with thread locker. All rotor/hub-133-8 are furnished with industry standard polycarbonate screw-in oil cap.

Note: On air ride suspensions, Kodiak recommends clocking calipers as close to the lowest amplitude point as possible on the wheel end assembly.

PART #	ROTOR/HUB	CALIPER	BRACKET	BOLT SIZE
2/H-133-7-8-REE	R/H-133-7-8-S Standard Auto	DBC-250-E E-Coat	CMB-133-7-E E-Coat	1/2"
2/H-133-7-8-EEE	R/H-133-7-8-E-S E-Coat	DBC-250-E E-Coat	CMB-133-7-E E-Coat	1/2"
2/H-133-7-8-DDD	R/H-133-7-8-D-S Dacromet	DBC-250-D Dacromet	CMB-133-7-D Dacromet	1/2"
2/H-133-7-8-DS	R/H-133-7-8-D-S Dacromet	DBC-250-SS Stainless Steel	CMB-133-7-D Dacromet	1/2"
2/H-133-7-9-REE	R/H-133-8-9-R-S Standard Auto	DBC-250-E E-Coat	CMB-133-7I-E E-Coat	9/16"
2/H-133-7-9-EEE	R/H-133-8-9-E-S E-Coat	DBC-250-E E-Coat	CMB-133-7I-E E-Coat	9/16"
2/H-133-7-9-DDD	R/H-133-8-9-D-S Dacromet	DBC-250-D Dacromet	CMB-133-7I-D Dacromet	9/16"
2/H-133-7-9-DS	R/H-133-8-9-D-S Dacromet	DBC-250-SS Stainless Steel	CMB-133-7I-D Dacromet	9/16"

• 5/8", 9/16" and 1/2" wheel bolt size available. Contact Kodiak for inquiries.

2/H-133-7-8-REE



2/H-133-7-8-EEE



2/H-133-7-8-DDD



2/H-133-7-8-DS



2/H-133-7-9-REE



*** Must use 8K outer bearing 02475.

2/H-133-7-9-EEE



*** Must use 8K outer bearing 02475.

2/H-133-7-9-DDD



*** Must use 8K outer bearing 02475.

2/H-133-7-9-DS



*** Must use 8K outer bearing 02475.

16 7000 LB AXLES



7000 LB

FOR DEXTER & LIPPERT COMPONENTS, INC. ONLY

Note: On air ride suspensions, Kodiak recommends clocking calipers as close to the lowest amplitude point as possible on the wheel end assembly.

Fits Dexter 7.2K after May of 2000



ROTOR SIZE & STYLE	BOLT PATTERN	BRAKE FLANGE	FITS SPINDLE	FITS AXLE	FITS WHEEL SIZE
13" Slip On	8 on 6.5" 9/16", 5/8" studs	4 Bolt	#42	Dexter & Lippert	16"

Contains 4 Caliper Mounting Bolts with Thread Locker

PART #	ROTOR	CALIPER	BRACKET	BOLT SIZE
2/R-133-7.2-9-REE	RTR-133-8-9 Standard Auto	DBC-250-E E-Coat	CMB-133-7.2D-E E-Coat	9/16"
2/R-133-7.2-5-EEE	RTR-133-8-5 E-Coat	DBC-250-E E-Coat	CMB-133-7.2D-E E-Coat	5/8"
2/R-133-7.2-9-EEE	RTR-133-8-9-E E-Coat	DBC-250-E E-Coat	CMB-133-7.2-E E-Coat	9/16"
2/R-133-7.2-5-REE	RTR-133-8-5-E Standard Auto	DBC-250-E E-Coat	CMB-133-7.2-D-E E-Coat	5/8"

2/R-133-7.2-9-REE



2/R-133-7.2-5-REE



13" INTEGRAL



ROTOR SIZE & STYLE	BOLT PATTERN	BRAKE FLANGE	FITS SPINDLE	FITS AXLE	FITS WHEEL SIZE	GREASE OR OIL
13" Integral	8 on 6.5" 9/16", 5/8" studs	4 Bolt	#42	Dexter & Lippert	16"	Grease or Oil

Bearings, seals and brake flange mounting bolts are NOT included with Integral brake sets. Bearing races and wheel studs are pressed in place and kit does contain 4 caliper mounting bolts with thread locker. All rotor/hub-133-8 are furnished with industry standard polycarbonate screw-in oil cap.

PART #	ROTOR/HUB	CALIPER	BRACKET	BOLT SIZE
2/H-133-72-9-EEE	R/H-133-8-9-E-S E-Coat	DBC-250-E E-Coat	CMB-133-7.2D-E E-Coat	9/16"
2/H-133-72-5-DEE	R/H-133-8-5-D-S Dacromet	DBC-250-E E-Coat	CMB-133-7.2D-E E-Coat	5/8"

2/H-133-72-9-EEE



*** Must use 8K outer bearing 02475.

2/H-133-72-5-DEE



*** Must use 8K outer bearing 02475.

7K ROTORS

Automotive quality casting. Rotors are 100% tested and balanced to meet very strict specifications. Our Rotors are vented to improve heat dissipation. All gray iron rotors are 35,000 PSI tensile strength castings for longer rotor life, improved structural integrity and superior performance.

13" ROTOR

Fits 8 on 6.5" hub w/1/2" or 9/16" wheel studs

PART #		FINISH
1/2"	9/16"	
RTR-133-7-8	RTR-133-8-9	Standard Auto
RTR-133-7-8-E	RTR-133-8-9-E	E-Coated
RTR-133-7-8-D	RTR-133-8-9-D	Dacromet
RTR-133-7-8-SS	RTR-133-8-9-SS	Stainless Steel

Please refer to mounting bracket section on page 18.

7K ROTORS/HUBS

13" ROTOR/HUB

Fits 8 on 6.5" hub with 1/2" wheel studs #25520 and #14276 bearing cups.

PART #	FINISH
R/H-133-7-8-S	Standard Auto
R/H-133-7-8-E-S	E-Coated
R/H-133-7-8-D-S	Dacromet

13" ROTOR INTEGRAL W/HUB

Fits 8 on 6.5" hub with 9/16" or 5/8" wheel studs #25520 and #02420 bearing cup. Must use 8K outer bearing. *8K rotor.

PART #		FINISH
9/16"	5/8"	
R/H-133-8-9-R-S	R/H-133-8-5-R-S	Standard Auto
R/H-133-8-9-E-S	R/H-133-8-5-E-S	E-Coated
R/H-133-8-9-D-S	R/H-133-8-5-D-S	Dacromet

- C comes with CAP (pt# 8001)

STAINLESS STEEL HUBS

Rustproof stainless steel hubs are ideal for extended marine use.

PART #	FITS	SPINDLE	BOLT PATTERN
H-42865-7-8-SS-S	7000 lb Axles	#42	8 on 6.5
DESCRIPTION			
Can be used on idler axles or can be paired with a 13" slip-on rotor for disc brake applications. Cupped with bearing races and studed and 1/2 inch wheel studs.			

RTR-133-7-8



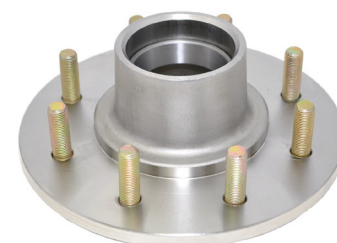
R/H-133-7-8-E-S



R/H-133-8-9-D-S-C



H-42865-7-8-SS-S



18 7000 LB AXLES



7000 LB

WHEEL STUDS

PART #	LENGTH	THREAD	KNURL DIA.	FIT
R/H-LB-2.0	2.00"	1/2-20 UNF-2A	.545	All Rotor/Hub 133-7
R/H-LB-2.5-9	2.50"	9/16-18 UNF-2A	.685	All Rotor/Hub 133-8
R/H-LB-3.165-5	3.165"	5/8-18 UNF-2A	.685	All Rotor/Hub 133-8



LUG NUTS - STAINLESS STEEL

PART #	DESCRIPTION
ALN-1375-SS	Fits 1/2" diameter wheel studs and is constructed of sturdy stainless steel for superior durability and corrosion resistance. Standard 60° cone fits tightly against the 60-degree taper of your wheel.



BEARING, RACE, AND SEAL REPLACEMENT INFORMATION FOR 13" INTEGRAL ROTOR/HUB

BEARINGS - 7000 LB. - 7.200 LB.

PART #	RACE	I.D.	O.D.	INNER	OUTER
7000 LB. (for 1/2" wheel stud)					
25580	25520	1.75"	3.265"	X	
14125A	14276	1.25"	2.717"		X
7200 LB. (for 9/16" and 5/8" wheel stud)					
25580	25520	1.75"	3.265"	X	
02475	02420	1.25"	2.688"		X

SEALS

2.25" Spindle Diameter

PART #	TYPE
22333TBN	Grease
370219A	Oil

7000-7200 LB AXLE CALIPER MOUNTING BRACKETS

PART #	DESCRIPTION	FIT	FINISH
CMB-133-7I-E	For Rotor-133-8-9 and Rotor/hub-133-8-9	Universal 5 Bolt Brake Flange on 7K Axles	E-Coat
CMB-133-7I-D	For Rotor-133-8-9 and Rotor/hub-133-8-9	Universal 5 Bolt Brake Flange on 7K Axles	Dacromet
CMB-133-7-E	For Rotor-133-7-8 and Rotor/hub-133-7-8	Universal 5 Bolt Brake Flange on 7K Axles	E-Coat
CMB-133-7-D	For Rotor-133-7-8 and Rotor/hub-133-7-8	Universal 5 Bolt Brake Flange on 7K Axles	Dacromet
CMB-133-7-SS	For Rotor-133-7-8 and Rotor/hub-133-7-8	Universal 5 Bolt Brake Flange on 7K Axles	Stainless Steel
CMB-133-7.2D-E	For Rotor-133-8-9 & 5 and Rotor/hub-133-8-9 & 5	Universal 4 Bolt Brake Flange on 7.2K Axles	E-Coat



13" SLIP ON KITS

Note: On air ride suspensions, Kodiak recommends clocking calipers as close to the lowest amplitude point as possible on the wheel end assembly.

ROTOR SIZE & STYLE	BOLT PATTERN	BRAKE FLANGE	FITS SPINDLE	FITS AXLE	FITS WHEEL SIZE
13" Slip on kits	8 on 6.5" 9/16" studs	4 Bolt	#42	8000 lb	16" & Larger

Note: This application may not be appropriate for hub piloted wheels. Confirm that the hub pilot extends past the rotor to sufficiently center the wheel. If it does not, consider using the Kodiak integral hub/rotor. Contains 4 caliper mounting bolts with thread locker. **Not recommended for air/hydraulic actuation.**

For use with 9/16" Wheel Bolts idler hub

PART #	ROTOR	CALIPER	BRACKET
2/R-133-8A-9-REE 2/R-133-8D-9-REE	RTR-133-8-9 Standard Auto	DBC-250-E E-Coat	CMB-133-8A-E CMB-133-8D-E E-Coat
2/R-133-8A-9-EEE 2/R-133-8D-9-EEE	RTR-133-8-9-E E-Coat	DBC-250-E E-Coat	CMB-133-8A-E CMB-133-8D-E E-Coat
2/R-133-8A-9-DDD 2/R-133-8D-9-DDD	RTR-133-8-9-D Dacromet	DBC-250-D Dacromet	CMB-133-8A-D CMB-133-8D-D Dacromet
2/R-133-8A-9-DSD 2/R-133-8D-9-DSD	RTR-133-8-9-D Dacromet	DBC-250-SS Stainless Steel	CMB-133-8A-D CMB-133-8D-D Dacromet
2/R-133-8A-9-SSS 2/R-133-8D-9-SSS	RTR-133-8-9-SS Stainless Steel	DBC-250-SS Stainless Steel	CMB-133-8A-SS CMB-133-8D-SS Stainless Steel

8A = AL-KO/Rockwell American
8D = Dexter/Lippert



2/R-133-8A-9-DDD
2/R-133-8D-9-DDD



2/R-133-8A-9-DSD
2/R-133-8D-9-DSD



2/R-133-8A-9-REE
2/R-133-8D-9-REE



2/R-133-8A-9-EEE
2/R-133-8D-9-EEE



2/R-133-8A-9-SSS
2/R-133-8D-9-SSS



A KODIAK Exclusive with a 6 year warranty. The FIRST all stainless steel! KODIAK was the first to offer a complete all stainless steel disc brake set in the industry! Stainless steel is the best available corrosion resistant material...Ideal for all saltwater applications.

20 8000 LB AXLES



8000 LB

13" INTEGRAL

ROTOR SIZE & STYLE	BOLT PATTERN	BRAKE FLANGE	FITS SPINDLE	FITS AXLE	FITS WHEEL SIZE	GREASE OR OIL
13" Integral	8 on 6.5" 9/16" studs	4 Bolt	#42	All	16" & Larger	Grease or Oil

Bearings, seals and brake flange mounting bolts are NOT included with Integral brake sets. Bearing races and wheel studs are pressed in place and kit does contain 4 caliper mounting bolts with thread locker. All rotor/hub-133-8 are furnished with industry standard polycarbonate screw-in oil cap.

Note: On air ride suspensions, Kodiak recommends clocking calipers as close to the lowest amplitude point as possible on the wheel end assembly.

For use with 9/16" Wheel studs idler hub

PART #	ROTOR/HUB	CALIPER	BRACKET
2/H-133-8A-9-REE 2/H-133-8D-9-REE	R/H-133-8-9-R-S Standard Auto	DBC-250-E E-Coat	CMB-133-8A-E CMB-133-8DI-E E-Coat
2/H-133-8A-9-EEE 2/H-133-8D-9-EEE	R/H-133-8-9-E-S E-Coat	DBC-250-E E-Coat	CMB-133-8A-E CMB-133-8DI-E E-Coat
2/H-133-8A-9-DDD 2/H-133-8D-9-DDD	R/H-133-8-9-D-S Dacromet	DBC-250-D Dacromet	CMB-133-8A-D CMB-133-8DI-D Dacromet
2/H-133-8A-9-DSD 2/H-133-8D-9-DSD	R/H-133-8-9-D-S Dacromet	DBC-250-SS Stainless Steel	CMB-133-8A-D CMB-133-8DI-D Dacromet

8A = AL-KO/Rockwell American
8D = Dexter/Lippert



Note: The 17.5" wheel is sold with 3 offsets: 0.19" inset, 0.31" outset and 0.50" outset. Most likely there will be interference with the 0.19" inset wheel. The 0.31" outset may be problematic on some depending on manufacturer. It is recommended to specify the 0.50" outset to avoid potential interference. **Each application contains 4 caliper mounting bolts with thread locker.**

All "8A" Rockwell / AL-KO kits come with a flange adapter plate pt# 8KF-SP.

2/H-133-8A-9-REE
2/H-133-8D-9-REE



2/H-133-8A-9-EEE
2/H-133-8D-9-EEE



2/H-133-8A-9-DDD
2/H-133-8D-9-DDD



2/H-133-8A-9-DSD
2/H-133-8D-9-DSD



Note: On air ride suspensions, Kodiak recommends clocking calipers as close to the lowest amplitude point as possible on the wheel end assembly.

ROTOR SIZE & STYLE	BOLT PATTERN	BRAKE FLANGE	FITS SPINDLE	FITS AXLE	FITS WHEEL SIZE
13" Slip on	8 on 6.5" 5/8" studs	4 Bolt	#42	All	16" & Larger

Note: This application may not be appropriate for hub piloted wheels. Confirm that the hub pilot extends past the rotor to sufficiently center the wheel. If it does not, consider using the Kodiak Integral hub/rotor. Contains 4 caliper mounting bolts with thread locker.

For use with 5/8" Wheel studs idler hub

PART #	ROTOR	CALIPER	BRACKET
2/R-133-8A-5-REE 2/R-133-8D-5-REE	RTR-133-8-5 Standard Auto	DBC-250-E E-Coat	CMB-133-8A-E CMB-133-8D-E E-Coat
2/R-133-8A-5-EEE 2/R-133-8D-5-EEE	RTR-133-8-5-E E-Coat	DBC-250-E E-Coat	CMB-133-8A-E CMB-133-8D-E E-Coat
2/R-133-8A-5-DDD 2/R-133-8D-5-DDD	RTR-133-8-5-D Dacromet	DBC-250-D Dacromet	CMB-133-8A-D CMB-133-8D-D Dacromet
2/R-133-8A-5-DSD 2/R-133-8D-5-DSD	RTR-133-8-5-D Dacromet	DBC-250-SS Stainless Steel	CMB-133-8A-D CMB-133-8D-D Dacromet
2/R-133-8A-5-SSS	RTR-133-8-5-SS Stainless Steel	DBC-250-SS Stainless Steel	CMB-133-8A-SS Stainless Steel

8A = AL-KO/Rockwell American
8D = Dexter/Lippert



2/R-133-8A-5-REE
2/R-133-8D-5-REE



2/R-133-8A-5-EEE
2/R-133-8D-5-EEE



2/R-133-8A-5-DDD
2/R-133-8D-5-DDD



2/R-133-8A-5-DSD
2/R-133-8D-5-DSD



2/R-133-8D-5-SSS



A KODIAK Exclusive with a 6 year warranty.
The FIRST all stainless steel! KODIAK was the first to offer a complete all stainless steel disc brake set in the industry! Stainless steel is the best available corrosion resistant material...Ideal for all saltwater applications.

13" INTEGRAL KITS

ROTOR SIZE & STYLE	BOLT PATTERN	BRAKE FLANGE	FITS SPINDLE	FITS AXLE	FITS WHEEL SIZE	GREASE OR OIL
13" Integral	8 on 6.5" 5/8" studs	4 Bolt	#42	All	16" & Larger	Grease or Oil

Bearings, seals and brake flange mounting bolts are NOT included with Integral brake sets. Bearing races and wheel studs are pressed in place and kit does contain 4 caliper mounting bolts with thread locker. All rotor/hub-133-8 are furnished with industry standard polycarbonate screw-in oil cap.

Note: On air ride suspensions, Kodiak recommends clocking calipers as close to the lowest amplitude point as possible on the wheel end assembly.

For use with 5/8" Wheel Bolts idler hub

PART #	ROTOR/HUB	CALIPER	BRACKET
2/H-133-8A-5-REE 2/H-133-8D-5-REE	R/H-133-8-5-R-S Standard Auto	DBC-250-E E-Coat	CMB-133-8A-E CMB-133-8DI-E E-Coat
2/H-133-8A-5-EEE 2/H-133-8D-5-EEE	R/H-133-8-5-E-S E-Coat	DBC-250-E E-Coat	CMB-133-8A-E CMB-133-8DI-E E-Coat
2/H-133-8A-5-DDD 2/H-133-8D-5-DDD	R/H-133-8-5-D-S Dacromet	DBC-250-D Dacromet	CMB-133-8A-D CMB-133-8DI-D Dacromet
2/H-133-8A-5-DSD 2/H-133-8D-5-DSD	R/H-133-8-5-D-S Dacromet	DBC-250-SS Stainless Steel	CMB-133-8A-D CMB-133-8DI-D Dacromet

8A = AL-KO/Rockwell American
8D = Dexter/Lippert



Note: The 17.5" wheel is sold with 3 offsets: 0.19" inset, 0.31" outset and 0.50" outset. Most likely there will be interference with the 0.19" inset wheel. The 0.31" outset may be problematic on some depending on manufacturer. It is recommended to specify the 0.50" outset to avoid potential interference. **Each application contains 4 caliper mounting bolts with thread locker.**

2/H-133-8A-5-REE
2/H-133-8D-5-REE



2/H-133-8A-5-EEE
2/H-133-8D-5-EEE



2/H-133-8A-5-DDD
2/H-133-8D-5-DDD



2/H-133-8A-5-DSD
2/H-133-8D-5-DSD



13" ROTORS

Automotive quality casting. Rotors are 100% tested and balanced to meet very strict specifications. Our rotors are vented to improve heat dissipation. All gray iron rotors are 35,000 PSI tensile strength castings for longer rotor life, improved structural integrity and superior performance.

All RTR-133-8 are furnished with industry standard poly-carbonate screw-in oil cap (can be used with grease).

13" ROTOR

Fits 8 on 6.5" hub w/9/16" or 5/8" wheel studs

PART #		FINISH
9/16"	5/8"	
RTR-133-8-9	RTR-133-8-5	Standard Auto
RTR-133-8-9-E	RTR-133-8-5-E	E-Coated
RTR-133-8-9-D	RTR-133-8-5-D	Dacromet
RTR-133-8-9-SS	RTR-133-8-5-SS	Stainless Steel

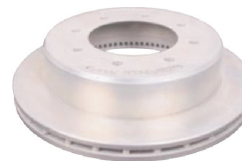
RTR-133-8-9
RTR-133-8-5



RTR-133-8-9-E
RTR-133-8-5-E



RTR-133-8-9-D
RTR-133-8-5-D



RTR-133-8-9-SS
RTR-133-8-5-SS



13" ROTOR INTEGRAL W/HUB

9/16" WHEEL STUDS

Fits 8 on 6.5" hub with 9/16" wheel studs #25520 and #02420 bearing cup.

PART #	FINISH
R/H-133-8-9-R-S-C	Standard Auto
R/H-133-8-9-E-S-C	E-Coated
R/H-133-8-9-D-S-C	Dacromet

R/H-133-8-9-R-S-C



R/H-133-8-9-E-S-C



R/H-133-8-9-D-S-C



13" ROTOR INTEGRAL W/HUB

5/8" WHEEL STUDS

Fits 8 on 6.5" hub with 5/8" wheel studs #25520 and #02420 bearing cup.

PART #	FINISH
R/H-133-8-5-R-S-C	Standard Auto
R/H-133-8-5-E-S-C	E-Coated
R/H-133-8-5-D-S-C	Dacromet

R/H-133-8-5-R-S-C



R/H-133-8-5-E-S-C



R/H-133-8-5-D-S-C



24 8000 LB AXLES



8000 LB

WHEEL STUDS

PART #	LENGTH	THREAD	KNURL DIA.	FIT
R/H-LB2.5-9	2.50"	9/16-18 UNF-2A	.685	All Rotor/hub 133-8
R/H-LB3.165-5	3.165"	5/8-18 UNF-2A	.685	All Rotor/hub 133-8

R/H-LB2.5-9



R/H-LB3.165-5



BEARING, RACE AND SEAL REPLACEMENT INFORMATION FOR 13" INTEGRAL ROTOR/HUB

BEARINGS - 8000 LB.

PART #	RACE	I.D.	O.D.	INNER	OUTER
25580	25520	1.75"	3.265"	X	
02475	02420	1.25"	2.688"		X

SEALS

2.25" Spindle Diameter

PART #	TYPE
22333TBN	Grease
370219A	Oil

8000 LB AXLE CALIPER MOUNTING BRACKETS

PART #	DESCRIPTION	FIT	FINISH
CMB-133-8A-E	For Rotor-133-8-9/8-5 & R/H-133-8-9 & 8-5 AL-KO/Rockwell American		E-Coat
CMB-133-8D-E	For Rotor-133-8-9/8-5 Dexter or Lippert		E-Coat
CMB-133-8A-D	For Rotor-133-8-9/8-5 AL-KO/Rockwell American		Dacromet
CMB-133-8D-D	For Rotor-133-8-9/8-5 Dexter or Lippert		Dacromet
CMB-133-8A-SS	For Rotor-133-8-9/8-5 AL-KO/Rockwell American	Universal - 4 Bolt Brake Flange on 8K Axles	Stainless Steel
CMB-133-8D-SS	For Rotor-133-8-9/8-5 Dexter or Lippert		Stainless Steel
CMB-133-8DI-E	For R/H-133-8-9/8-5 Dexter or Lippert		E-Coat
CMB-133-8DI-D	For R/H-133-8-9/8-5 Dexter or Lippert		Dacromet
CMB-133-8DD-R	For R/H-133-8-9/8-5 Dexter disc only	*	RAW
CMB-133-8DD-D	For R/H-133-8-9/8-5 Dexter disc only	*	Dacromet
CMB-133-8DD-SS	For R/H-133-8-9/8-5 Dexter disc only	*	Stainless Steel
CMB-11-8D-HD-E	For R/H-11-8D-9/10	*	E-Coat

If previous Dexter disc. will not interchange with Dexter parts.

CMB-133-8A-E



CMB-133-8D-E



CMB-133-8A-D



CMB-133-8D-D



CMB-133-8A-SS



CMB-133-8D-SS



CMB-133-8DI-E



CMB-133-8DI-D



CMB-11-8D-HD-E



CMB-133-8DD-R



* Use With Dexter Disc Hub

CMB-133-8DD-DAC



* Use With Dexter Disc Hub

CMB-133-8DD-SS



* Use With Dexter Disc Hub

13" INTEGRAL HEAVY DUTY KITS

ROTOR SIZE & STYLE	BOLT PATTERN	BRAKE FLANGE	FITS SPINDLE	FITS AXLE	FITS WHEEL SIZE	GREASE OR OIL
13" Integral	8 on 6.5" 9/16" studs 5/8" studs	4 Bolt	#42	All	16" & Larger	Grease or Oil

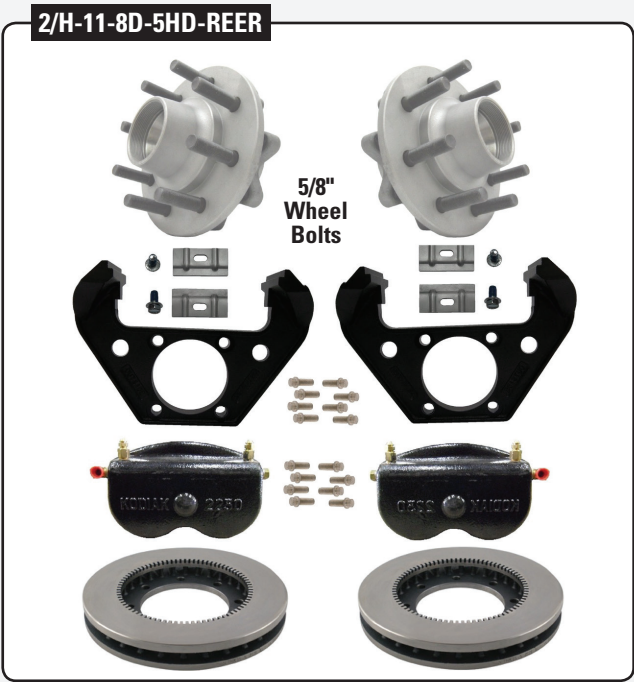
Bearings, seals and brake flange mounting bolts are NOT included with Integral brake sets. Bearing races and wheel studs are pressed in place and kit does contain 4 caliper mounting bolts with thread locker. All rotor/hub-133-8 are furnished with industry standard polycarbonate screw-in oil cap.

Note: On air ride suspensions, Kodiak recommends clocking calipers as close to the lowest amplitude point as possible on the wheel end assembly.

PART #	ROTOR	CALIPER	BRACKET	HUB/SPACER	BOLT SIZE
2/H-11-8D-9HD-REER	RTR-11-10Q Standard Auto	DBC-2250-E E-Coat	CMB-11-8D-HD-E E-Coat	H/S-42-5-S	9/16"
2/H-11-8D-5HD-REER	RTR-11-10Q Standard Auto	DBC-2250-E E-Coat	CMB-11-8D-HD-E E-Coat	H/S-42-5-S	5/8"



Includes dust cap.



Includes dust cap.

26 8000 LB AXLES



8000 LB

8000 LB AXLE CALIPER OPTIONS

All Kodiak calipers are of low drag design. This retracts the piston further than the competition, which equates to a cooler running brake. 100% and low pressure tested. Contains 2 special bolts with thread locker (use socket or allen wrench), dual port bleed screw, 2-1/2" stainless steel piston & ceramic pads are standard with Dacromet coated and stainless steel calipers.

DISC BRAKE CALIPERS

Fits 8000 lb axles

PART #	DESCRIPTION	FINISH
DBC-250-E	2-1/2" (Hard Chrome Plated) piston. Loaded standard with Ceramic friction pads.	E- Coated
DBC-250-D	2-1/2" (Stainless Steel) piston. Loaded standard with Ceramic friction pads.	Dacromet
DBC-250-SS	2-1/2" (Stainless Steel) piston. Loaded standard with Ceramic friction pads.	Stainless Steel
DBC-2250-E	2-1/2" (Hard Chrome Plated) piston. Loaded standard with Ceramic friction pads.	E-Coated

DBC-250-E



DBC-250-D



DBC-250-SS



DBC-2250-E



3500 Lb Axle Caliper Parts Breakdown: See Page 43

CERAMIC FRICTION PADS

(Standard on E-Coat & HD Applications)

DBC-250-PAD



Available boxed:
DBC-250-PAD-K
DBC-250-PAD-SS-K

STAINLESS STEEL BACKED CERAMIC FRICTION PADS.

DBC-250-PAD-SS



KODIAK was the first to offer stainless steel backed ceramic pads in the industry! Stainless steel is the best available corrosion resistant material...Ideal for all saltwater applications.

10K DUAL WHEEL APPLICATIONS

Note: On air ride suspensions, Kodiak recommends clocking calipers as close to the lowest amplitude point as possible on the wheel end assembly.

ROTOR SIZE & STYLE	BOLT PATTERN	BRAKE FLANGE	FITS SPINDLE	FITS WHEEL SIZE	GREASE OR OIL
11" Integral	8 on 6.5" 5/8" studs	5 Bolt= AL-KO/ Rockwell American 7 Bolt=Dexter/Lippert	#99	16" Dual or 17.5" Single	Grease or Oil

PART #	ROTOR	CALIPER	BRACKET	HUB/SPACER
2/H-11-10Q-DDDD	RTR-11-10Q-D Dacromet	DBC-338-D Dacromet	CMB-11-10Q-D Dacromet	H/S-99-D-S Dacromet
2/R-11-10D-DDDD	RTR-11-10D-D Dacromet	DBC-338-D Dacromet	CMB-11-10D-D Dacromet	RTR-11-10D-SPC-D Dacromet
2/H-11-10A-DDDD	RTR-11-10Q-D Dacromet	DBC-338-D Dacromet	CMB-11-10Q-D Dacromet	H/S-99-ALKO-D-S Dacromet
2/H-11-10Q-DDDD475	RTR-11-10Q-D Dacromet	DBC-338-D Dacromet	CMB-11-10Q-D Dacromet	H/S-99-475-D-S Dacromet
2/H-11-10Q-REER475	RTR-11-10Q Raw	DBC-338-E E-Coat	CMB-11-10Q-E E-Coat	H/S-99-475-D-S Raw
2/H-11-10Q-REER	RTR-11-10Q Raw	DBC-338-E E-Coat	CMB-11-10Q-E E-Coat	H/S-99-S Raw
2/R-11-10D-REER	RTR-11-10D-D Raw	DBC-338-E E-Coat	CMB-11-10D-E E-Coat	RTR-11-10D-SPC Raw
2/H-11-10A-REER	RTR-11-10Q Raw	DBC-338-E E-Coat	CMB-11-10Q-R E-Coat	H/S-99-ALKO-S Raw

Note: The 17.5" wheel is sold with 3 off-sets: 0.19" inset, 0.31" outset and 0.50" outset. Most likely there will be interference with the 0.19" inset wheel. The 0.31" outset may be problematic on some depending on manufacturer. It is recommended to specify the 0.50" outset to avoid potential interference. **Each application contains 4 caliper mounting bolts with thread locker.**

2/R-11-10D-DDDD

Disc hub mounting bolts included (32 pcs)



Fits Dexter Hub 8-288-03
Inner bearing shoulder to brake flange = 4.79"

2/H-11-10A-DDDD



Inner bearing shoulder to brake flange = 3.18"

Fits #99 spindle

2/H-11-10Q-DDDD 2/H-11-10Q-DDDD475 (475 Pilot)



Inner bearing shoulder to brake flange = 3.89"

Fit #99 Spindle

**ADDITIONAL COATING OPTIONS
ARE AVAILABLE FOR BOTH DUAL
& SINGLE WHEEL APPLICATIONS**

10K SINGLE WHEEL APPLICATIONS

Note: On air ride suspensions, Kodiak recommends clocking calipers as close to the lowest amplitude point as possible on the wheel end assembly.

ROTOR SIZE & STYLE	BOLT PATTERN	BRAKE FLANGE	FITS SPINDLE	FITS WHEEL SIZE	GREASE OR OIL
13" Integral	8 on 6.5" 5/8" studs	5 Bolt= AL-KO/ Rockwell American 7 Hole=Dexter/Lippert	#99 #99	17.5" Single	Grease or Oil

PART #	ROTOR	CALIPER	BRACKET	HUB/SPACER
2/H-13-10Q-DDDD	RTR-13-10-D Dacromet	DBC-338-D Dacromet	CMB-13-10Q-D Dacromet	H/S-99-D-S Dacromet
2/H-13-10Q-DDDD475	RTR-13-10-D Dacromet	DBC-338-D Dacromet	CMB-13-10Q-D Dacromet	H/S-99-475-D-S Dacromet

Note: The 17.5" wheel is sold with 3 off-sets: 0.19" inset, 0.31" outset and 0.50" outset. Most likely there will be interference with the 0.19" inset wheel. The 0.31" outset may be problematic on some depending on manufacturer. It is recommended to specify the 0.50" outset to avoid potential interference. **Each application contains 4 caliper mounting bolts with thread locker.**

2/H-13-10Q-DDDD



Kodiak Brakes on Horse Trailers. What's stopping you?

You've got the best horses, the best trailer, and the best tack relying on your trailer braking system. . . can it handle the job?

Kodiak Disc Brakes are the **BEST BRAKE INVESTMENT** you will ever make. Superior strength, advanced design, and corrosion protection make Kodiak the best performing disc brake on the market! Specify Kodiak Disc Brakes on your next trailer . . . you'll be glad you did!



KODIAK DISC BRAKE SYSTEM

- 47% shorter stopping distance*
- Smoother Stopping*
- Lower Maintenance Costs*
- Retrofit ANY Axle
- Replacement Parts at Auto Stores
- **LIFETIME WARRANTY** on Ceramic Brake Pads



HD DUAL WHEEL APPLICATIONS

Note: On air ride suspensions, Kodiak recommends clocking calipers as close to the lowest amplitude point as possible on the wheel end assembly.

ROTOR SIZE & STYLE	BOLT PATTERN	BRAKE FLANGE	FITS SPINDLE	FITS WHEEL SIZE	GREASE OR OIL
11" Dual Wheel	8 on 6.5" 5/8" studs	5 Bolt= AL-KO/ Rockwell American 7 Hole=Dexter/Lippert	#99 #99	16" Dual or 17.5" Single	Grease or Oil

PART #	ROTOR	CALIPER	BRACKET	HUB/SPACER
2/H-11-10Q-HD-REER	RTR-11-10Q Raw	DBC-2250-E E-Coat	CMB-11-10Q-E E-Coat	H/S-99-S Raw
2/R-11-10D-HD-REER	RTR-11-10Q Raw	DBC-2250-E E-Coat	CMB-11-10D-HD-E E-Coat	RTR-11-10D-SPC-D Raw
2/R-11-10D-REER-43	RTR-11-10Q Raw	DBC-2250-E E-Coat	CMB-11-10D430-E E-Coat	RTR-11-10D430-SPCR Raw
2/H-11-10Q-H7-REER	RTR-11-10Q Raw	DBC-2250-E E-Coat	CMB-11-10Q-E E-Coat	H/S-99-475-S Raw

Note: The 17.5" wheel is sold with 3 offsets: 0.19" inset, 0.31" outset and 0.50" outset. Most likely there will be interference with the 0.19" inset wheel. The 0.31" outset may be problematic on some depending on manufacturer. It is recommended to specify the 0.50" outset to avoid potential interference. **Each application contains 4 caliper mounting bolts with thread locker.**

10,000 LB

2/H-11-10Q-HD-REER 2/H-11-10Q-H7-REER (475 Pilot)



Inner bearing shoulder to brake flange = 3.89"

2/R-11-10D-HD-REER



Fits Dexter Hub 8-288-03
Inner bearing shoulder to brake flange = 4.79"

2/R-11-10D-REER-43



Fits Dexter Hub 008-430-03; Leaf Spring Applications Only.
General Duty Spring Only.

10K HD SINGLE WHEEL APPLICATIONS

Note: On air ride suspensions, Kodiak recommends clocking calipers as close to the lowest amplitude point as possible on the wheel end assembly.

ROTOR SIZE & STYLE	BOLT PATTERN	BRAKE FLANGE	FITS SPINDLE	FITS WHEEL SIZE	GREASE OR OIL
13" Single Wheel	8 on 6.5" 5/8" studs	5 Bolt AL-KO/ Rockwell American 7 Hole, Dexter/Lippert	#99	17.5" Single	Grease or Oil

PART #	ROTOR	CALIPER	BRACKET	HUB/SPACER
2/H-13-10Q-HD-REER	RTR-13-10 Raw	DBC-338-HD-E E-Coat	CMB-13-10Q-HD-E E-Coat	H/S-99-S Raw
2/H-13-10A-HD-REER	RTR-13-10 Raw	DBC-338-HD-E E-Coat	CMB-13-10Q-HD-E E-Coat	H/S-99-ALKO-S Raw
2/H-13-10Q-H7-REER	RTR-13-10 Raw	DBC-338-HD-E E-Coat	CMB-13-10Q-HD-E E-Coat	H/S-99-475-S Raw
2/H-13-10A-H7-REER	RTR-13-10 Raw	DBC-338-HD-E E-Coat	CMB-13-10Q-HD-E E-Coat	H/S-99-ALKO-475-S Raw

Note: The 17.5" wheel is sold with 3 offsets: 0.19" inset, 0.31" outset and 0.50" outset. Most likely there will be interference with the 0.19" inset wheel. The 0.31" outset may be problematic on some depending on manufacturer. It is recommended to specify the 0.50" outset to avoid potential interference. **Each application contains 4 caliper mounting bolts with thread locker.**

2/H-13-10Q-HD-REER
2/H-13-10Q-H7-REER (475 Pilot)



Inner bearing shoulder to brake flange = 3.89"

Fits #99 spindle

2/H-13-10A-HD-REER
2/H-13-10Q-H7-REER (475 Pilot)



Inner bearing shoulder to brake flange = 3.18"

Fits #99 spindle

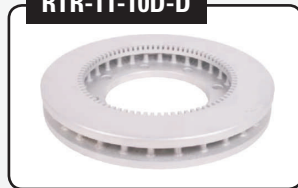
10K ROTORS

Automotive Quality Casting. Rotors are 100% tested and balanced to meet very strict specifications. Our Rotors are vented to improve heat dissipation. All gray iron rotors are 35,000 PSI tensile strength castings for longer rotor life, improved structural integrity and superior performance.



PART #	SIZE	BRAND	FINISH	DIAMETER
RTR-11-10Q-D	Dual Wheel 11"	Rockwell American Dexter/Lippert	Dacromet	11.3"
RTR-11-10D-D	Dual Wheel 11"	Dexter/Lippert	Dacromet	11.6"
RTR-13-10-D	Single Wheel 13"	Rockwell American Dexter/Lippert	Dacromet	

RTR-11-10Q-D
RTR-11-10D-D



RTR-13-10-D



10,000 LB AXLES CALIPER BRACKETS

PART #	BRAND	FINISH	WHEEL
CMB-11-10Q-D	Rockwell American	Dacromet	Single & Dual Wheel
CMB-11-10D-D	Dexter/Lippert	Dacromet	Single & Dual Wheel
CMB-13-10Q-D	Rockwell American	Dacromet	Single Wheel Only
CMB-13-10D-D	Dexter/Lippert	Dacromet	Single Wheel Only
CMB-11-10Q-HD-E	Rockwell American	E-Coat	HD Single & Dual Wheel
CMB-11-10D-HD-E	Dexter/Lippert	E-Coat	HD Single & Dual Wheel
CMB-13-10Q-HD-E	Rockwell American	E-Coat	HD Single Wheel Only
CMB-13-10D-HD-E	Dexter/Lippert	E-Coat	HD Single Wheel Only
CMB-13-10A-HD-E	AL-KO	E-Coat	HD Single Wheel Only

CMB-11-10Q-D



CMB-11-10D-D



CMB-13-10Q-D



CMB-13-10D-D



CMB-11-10Q-HD-E



CMB-11-10D-HD-E



CMB-13-10Q-HD-E



CMB-13-10D-HD-E



CMB-13-10A-HD-E



32 10,000 LB AXLES



10,000 LB

10,000 LB AXLE CALIPER OPTIONS

All Kodiak calipers are of low drag design. This retracts the piston further than the competition, which equates to a cooler running brake. 100% high and low pressure tested. Contains 2 special bolts with Thread Locker (5/16" allen wrench), dual port bleed screw, stainless steel piston & ceramic pads, unless specified E-Coat. See E-Coat caliper DBC-338-E below.

DISC BRAKE CALIPERS

Fits 10,000 lb axles

PART #	DESCRIPTION	FINISH
DBC-338-E	3-3/8" (hard chrome plated) piston. Loaded standard with ceramic friction pads.	E-Coat
DBC-338-D	3-3/8" (stainless steel) piston. Loaded standard with ceramic friction pads.	Dacromet
DBC-338-SS	3-3/8" (stainless steel) piston. Loaded standard with ceramic friction pads.	Stainless Steel
DBC-338-HD-E	3-3/8" (hardened chrome) piston. Loaded standard with ceramic friction pads.	E-Coat
DBC-2250-E	2-1/2" (hardened chrome) piston. Loaded standard with ceramic friction pads.	E-Coat

DBC-338-E



DBC-338-D



DBC-338-SS



DBC-338-HD-E



DBC-2250-E



10,000 LB Axle Caliper Parts Breakdown: See Page 43

No Stainless Steel Pad Available

BEARING, RACE AND SEAL REPLACEMENT FOR 10,000 LB AXLES

BEARINGS & RACE

BEARING #	INNER BEARINGS 10,000 LB		
	RACE #	BEARING I.D.	RACE/CUP O.D.
28580	28521	2.00"	3.625"
OUTER BEARINGS 10,000 LB			
25580	25520	1.75"	3.26"

On Rockwell/AL-KO Only

SEALS

2.25" Spindle Diameter

PART #	FITS
CR27438	99 Spindle

SPACERS FOR 10,000 LB AXLES

PART #	DESCRIPTION	FINISH
H/S-99-D-S	Hub-Spacer, Fits #99 Spindle (See Bearing/Seal Info)	Dacromet
RTR-11-10D-SPC-D	Spacer	Dacromet
H/S-99 ALKO-D-S	Hub-Spacer, Fits #99 Spindle (See Bearing/Seal Info)	Dacromet

H/S-99-D-S



RTR-11-10D-SPC-D



H/S-99-SW-D



H/S-99-ALKO-D-S



- Also available (1) without coating on all components, except calipers which come E-Coated and (2) with Dacromet coated components and a stainless steel caliper.
- 4.88: Pilot standard; 4.75" Pilot by special order

12K DUAL WHEEL APPLICATIONS

Note: On air ride suspensions, Kodiak recommends clocking calipers as close to the lowest amplitude point as possible on the wheel end assembly.

ROTOR SIZE & STYLE	BOLT PATTERN	BRAKE FLANGE	FITS SPINDLE	FITS WHEEL SIZE	GREASE OR OIL
11" Dual Wheel / Single Wheel	8 on 6.5" 5/8" studs	5 Bolt AL-KO/ Rockwell American 7 Hole, Dexter/Lippert	#120 AL-KO #160 RA	16" Dual or 17.5" Single	Grease or Oil

PART #	ROTOR	CALIPER	BRACKET	HUB/SPACER
2/R-11-12Q-HD-REER	RTR-11-10Q	DBC-2250-E E-Coat	CMB-11-12Q-E E-Coat	RTR-11-12Q-SPCR
2/R-11-12D-HD-REER	RTR-11-10Q	DBC-2250-E E-Coat	CMB-11-12D-HD-E E-Coat	RTR-11-12Q-SPCR
2/H-11-12A-HD-REER	RTR-11-10Q E-Coat	DBC-2250-E E-Coat	CMB-11-12Q-E E-Coat	H/S-120-DW H/S-120-SW

Note: The 17.5" wheel is sold with 3 offsets: 0.19" inset, 0.31" outset and 0.50" outset. Most likely there will be interference with the 0.19" inset wheel. The 0.31" outset may be problematic on some depending on manufacturer. It is recommended to specify the 0.50" outset to avoid potential interference. **Each application contains 4 caliper mounting bolts with thread locker.**

2/R-11-12Q-HD-REER



2/R-11-12D-HD-REER



Will Not Fit Dexter Disc Axle.

2/H-11-12A-HD-REER



Fits On 10K HD and 12K Only.

SINGLE WHEEL APPLICATIONS

Note: On air ride suspensions, Kodiak recommends clocking calipers as close to the lowest amplitude point as possible on the wheel end assembly.

ROTOR SIZE & STYLE	BOLT PATTERN	BRAKE FLANGE	FITS SPINDLE	FITS WHEEL SIZE	GREASE OR OIL
13" Dual Wheel / Single Wheel	8 on 6.5" 5/8" studs	5 Bolt AL-KO/ Rockwell American 7 Hole, Dexter/Lippert	#120 AL-KO #160 RA	17.5" Single	Grease or Oil

PART #	ROTOR/HUB	CALIPER	BRACKET	HUB/SPACER
2/R-13-12Q-REER	RTR-13-10	DBC-338-E E-Coat	CMB-13-10Q-E E-Coat	RTR-11-12Q-SPCR
2/R-13-12D-HD-REER	RTR-13-10	DBC-338-HD-E E-Coat	CMB-13-10D-HD-E E-Coat	RTR-11-12Q-SPCR Standard Auto
2/H-13-12H-HD-REER	RTR-13-10	DBC-338-HD-E E-Coat	CMB-13-10Q-HD-E E-Coat	H/S-120-SW-S E-Coat

Note: The 17.5" wheel is sold with 3 offsets: 0.19" inset, 0.31" outset and 0.50" outset. Most likely there will be interference with the 0.19" inset wheel. The 0.31" outset may be problematic on some depending on manufacturer. It is recommended to specify the 0.50" outset to avoid potential interference. **Each application contains 4 caliper mounting bolts with thread locker.**

2/R-13-12Q-REER



Inner bearing shoulder to brake flange = 5.79"

2/R-13-12D-HD-REER



Inner bearing shoulder to brake flange = 5.78"

2/H-13-12H-HD-REER



Inner bearing shoulder to brake flange = 2.57"

ROTORS

Automotive quality casting. Rotors are 100% tested and balanced to meet very strict specifications. Our Rotors are vented to improve heat dissipation. All gray iron rotors are 35,000 PSI tensile strength castings for longer rotor life, improved structural integrity and superior performance.



PART #	SIZE	FINISH
RTR-11-10D	Dual Wheel 11" 11.3"	Standard Auto Dacromet
RTR-13-10	Single Wheel 13"	Standard Auto

Note: Available in Dacromet



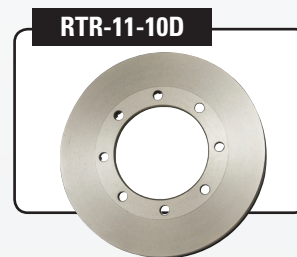
Diameter = 11.3"



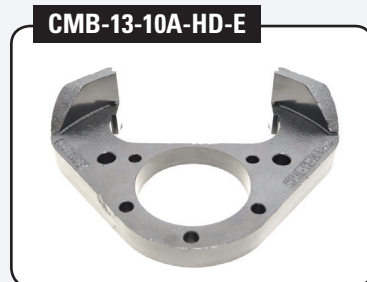
12,000 LB AXLES CALIPER BRACKETS



PART #	BRAND	FINISH	WHEEL
CMB-11-12Q-E	Rockwell American AL-KO	E-Coat	HD Dual Wheel
CMB-11-12D-HD-E	Dexter/Lippert	E-Coat	HD Dual Wheel
CMB-13-12Q-HD-E	Rockwell American	E-Coat	HD Single Wheel
CMB-13-10A-HD-E	Rockwell American	E-Coat	HD Single Wheel
CMB-13-10D-HD-E	Dexter/Lippert	E-Coat	HD Single Wheel



Diameter = 11.6"



36 12,000 LB AXLES



12,000 LB

12,000 LB AXLE CALIPER OPTIONS

All Kodiak calipers are of low drag design. This retracts the piston further than the competition, which equates to a cooler running brake. 100% high and low pressure tested.

DISC BRAKE CALIPERS

Fits 12,000 lb axles

PART #	DESCRIPTION	FINISH
DBC-338-HD-E	3-3/8" (hard chrome plated) piston. Loaded standard with Ceramic friction pads.	E- Coat
DBC-2250-E	(2) 2-1/2" (hard chrome plated) pistons. Loaded standard with Ceramic friction pads.	E-Coat

SPACERS FOR 12,000 LB AXLES

PART #	DESCRIPTION	FINISH
H/S-120-DW	Spacer	Standard Auto
RTR-11-12Q-SPCR	Spacer	Dacromet

4.88: Pilot Standard; 4.75" Pilot by Special Order

BEARING, RACE AND SEAL REPLACEMENT FOR 12,000 LB AXLES

BEARINGS & RACE

INNER BEARINGS 12,000 LB			
BEARING #	RACE #	BEARING I.D.	BEARING O.D.
JM511946	JM511910	2.559"	4.330"
OUTER BEARINGS 12,000 LB			
JM205149	JM205110	1.968"	3.543"

SEALS

2.25" Spindle Diameter

PART #	FITS
CR31281	120 Spindle

DBC-338-HD-E



SEE CALIPER PARTS
BREAKDOWN PAGE 39

DBC-2250-HD-E



(No Stainless Steel Pad Available)

SEE CALIPER PARTS
BREAKDOWN PAGE 40

H/S-120-DW-S



RTR-11-12Q-SPCR



H/S-120-SW-S



14K SPECIAL APPLICATIONS

Note: On air ride suspensions, Kodiak recommends clocking calipers as close to the lowest amplitude point as possible on the wheel end assembly.

ROTOR SIZE & STYLE	BOLT PATTERN	BRAKE FLANGE	FITS SPINDLE	FITS WHEEL SIZE
14"	M 22x1.5 10 on 11-1/4"BC	5 Bolt	#160 8.66" Pilot	19.5" Single w/5.6" Inset ref."ALCOA" P/N 773600

Disc hub mounting bolts included (16 pcs)
B.F. to inner bearing shoulder=2.45" (Gives additional 4.7" frame width.)

PART #	ROTOR	CALIPER	BRACKET	HUB/SPACER
2/H-15-14QH-EEEE	RTR-15-E	DBC-2250-E	CMB-15-14Q-E	H/S-160-SW-E

BEARING, RACE AND SEAL REPLACEMENT FOR 12,000 LB AXLES

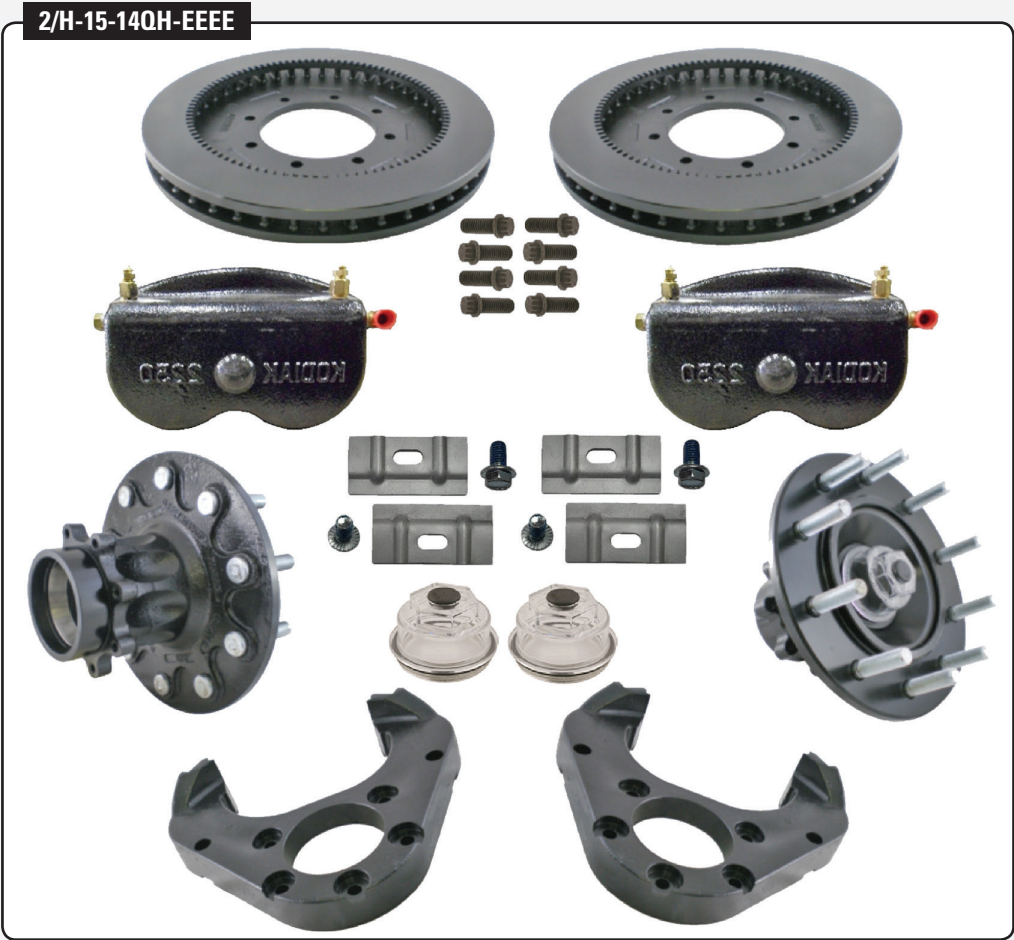
BEARINGS & RACE

INNER BEARINGS 14,000 LB			
BEARING #	RACE #	BEARING I.D.	CONE/RACE O.D.
39590	JM511910	2.625"	4.437"
OUTER BEARINGS 14,000 LB			
JM205149	JM205110	1.968"	3.543"

SEALS

2.25" Spindle Diameter

PART #	FITS
CR31281	160 Spindle



DID YOU KNOW?

Kodiak
TRAILER COMPONENTS

KODIAK BRAKE HOSES

At Kodiak we take pride in serving our customers and take the time to listen to their needs. Our brake hoses offer new solutions for old problems by introducing stainless steel flairs, a larger open area with more room for line wrenches, and 40% more thread engagement than industry standard fittings. Kodiak again raises the standards for the trailer industry by providing a competitively priced solution that our customers appreciate.

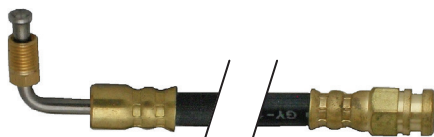
NEW SOLUTIONS FOR OLD PROBLEMS

1. Stainless Steel Flare Eliminates Tendency For Brass Flares To Split During Tightening.
2. Open Area Provides Room For Line Wrenches.
3. All Kodiak Fittings Have 40% More Thread Engagement Than Industry Standard Fittings, For Stronger, More Leak Proof Connections.
4. Kodiak 4-Way Fittings Available For 3/16" Or 1/4" Diameter Lines.

BH-3MFS



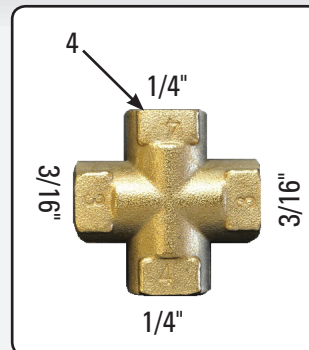
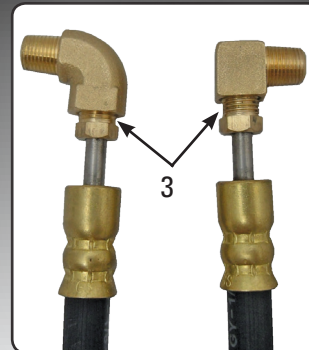
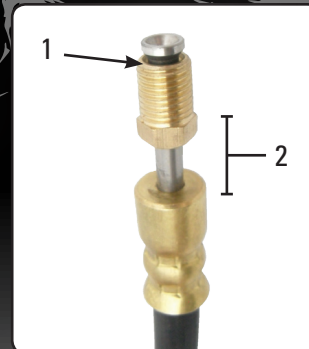
BH-3MFS90FF



BH-3MFS90



See page 39 for available sizes



3/16" BRAKE HOSE - MALE INVRTD FLARE W/SWIVEL (Both Ends)

PART #	DESCRIPTION
BH-3MFS-012	1/8" ID Dot 12"
BH-3MFS-014	1/8" ID Dot 14"
BH-3MFS-017	1/8" ID Dot 17"
BH-3MFS-018	1/8" ID Dot 18"
BH-3MFS-024	1/8" ID Dot 24"
BH-3MFS-030	1/8" ID Dot 30"
BH-3MFS-036	1/8" ID Dot 36"
BH-3MFS-040	1/8" ID Dot 40"
BH-3MFS-042	1/8" ID Dot 42"
BH-3MFS-046	1/8" ID Dot 46"
BH-3MFS-048	1/8" ID Dot 48"
BH-3MFS-054	1/8" ID Dot 54"
BH-3MFS-057	1/8" ID Dot 57"
BH-3MFS-072	1/8" ID Dot 72"
BH-3MFS-074	1/8" ID Dot 74"
BH-3MFS-080	1/8" ID Dot 80"
BH-3MFS-086	1/8" ID Dot 86"
BH-3MFS-096	1/8" ID Dot 96"
BH-3MFS-101	1/8" ID Dot 101"
BH-3MFS-110	1/8" ID Dot 110"
BH-3MFS-180	1/8" ID Dot 180"
BH-3MFS-192	1/8" ID Dot 192"
BH-3MFS-204	1/8" ID Dot 204"
BH-3MFS-216	1/8" ID Dot 216"
BH-3MFS-228	1/8" ID Dot 216"
BH-3MFS-240	1/8" ID Dot 240"
BH-3MFS-252	1/8" ID Dot 252"
BH-3MFS-264	1/8" ID Dot 264"
BH-3MFS-276	1/8" ID Dot 276"
BH-3MFS-288	1/8" ID Dot 288"
BH-3MFS-300	1/8" ID Dot 300"
BH-3MFS-312	1/8" ID Dot 312"
BH-3MFS-360	1/8" ID Dot 360"

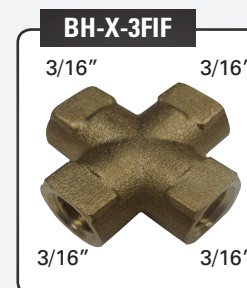
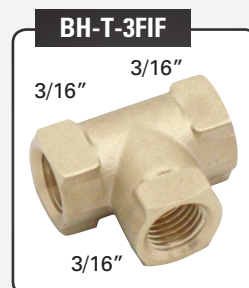
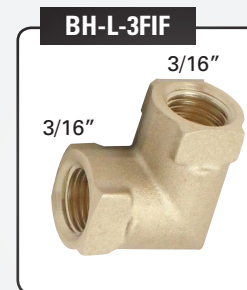
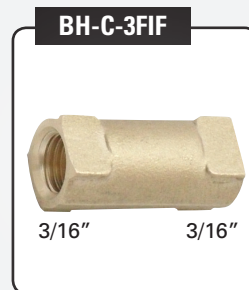
SPECIALTY HOSES

PART #	DESCRIPTION
BH-3MFS90-019	1/8" ID Dot 19" (1'7") Brake Hose w/90 On One End, 3/16 Male Invert Flare On OT
BH-3MFS90-021	1/8" ID Dot 21" (1'9") Brake Hose w/90 On One End, 3/16 Male Invert Flare On OT
BH-3MFS90FF-018	Same As Bh-3MFS-018 Except w/90 On One End, Female Flare On The Other End
BH-3MFS90FF-021	1/8" ID Dot 21" (1'9") Brake Hose w/90 On One End, Female Flare On The Other End
BH-3MFSFF-012	1/8" ID Dot 12" (1') Brake Hose 3/16" Male Invert Flare w/Swivel, Female Invert
BH-3MFSFF-024	1/8" ID Dot 24" (2') Brake Hose 3/16" Male Invert Flare w/Swivel, Female Invert
BH-3MFSFF-018	1/8" ID Dot 18" (1'6") Brake Hose 3/16" Male Invert Flare w/Swivel, Female Invert

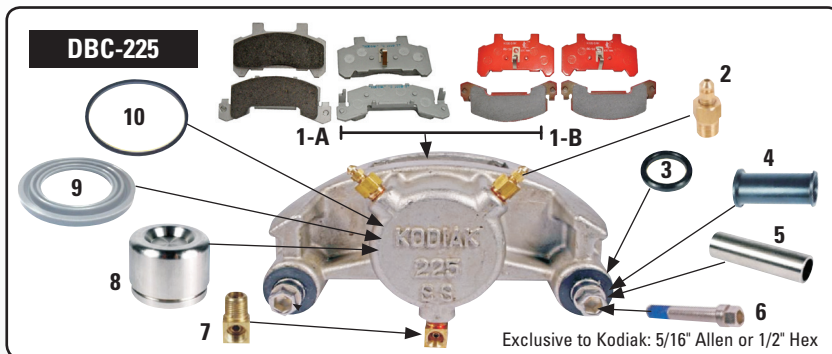
FITTINGS

PART #	DESCRIPTION
BH-C-3FIF	Forged Brass Coupling, 1/8" DI 3/16" Fif
BH-L-3FIF	Forged Brass L Fitting, 1/8" DI 3/16" Fif
BH-T-3FIF	Forged Brass T Fitting, 1/8" DI 3/16" Fif
BH-T-4-3FIF	Forged Brass T Fitting, 1 @ 4FIF And 2 @ 3FIF
Kodiak Line Wrenches	Kodiak Line Wrenches. 1/4" - 5/16", 3/8" - 7/16" And 1/2" (Combination). Includes Pouch (10 Oz)

FIF = Female Inverted Flare
MFFN = SS Male Flare w/Brass Flare Nut
MIF = Brass Male Inverted Flare



3500, 5200-6000 LB AXLE



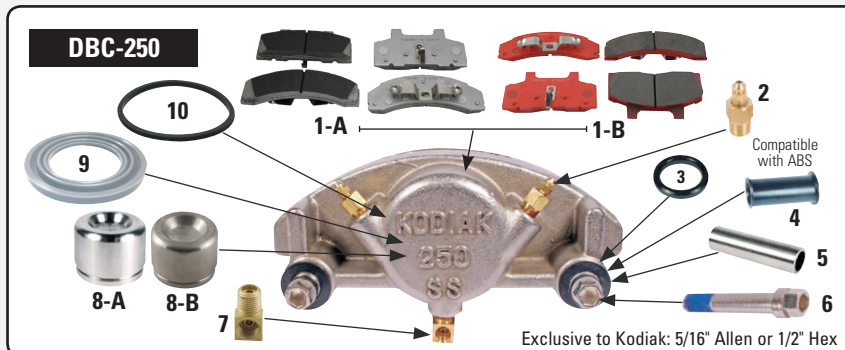
MODEL	YEAR	AXLE	BRAKE PAD #
Buick Skylark	86-90	Front	MKD-289
Chevrolet Cavalier	82-92	Front	MKD-289
Oldsmobile Cutlass, Calais, Ciera, Achieva	82-90	Front	MKD-289
Pontiac Sunbird	85-91	Front	MKD-289

The list is a partial list of GM cars that can be used as a reference for replacement pads on the Kodiak disc brake caliper.

REFERENCE #	DESCRIPTION	PART #
1-A	Friction Pads (Stainless Steel Backed Ceramic)	DBC-225-PAD-SS
1-B	Friction Pads (Ceramic Standard on E-Coat)	DBC-225-PAD
2	Brass Bleed Port (1/4"-28 Bleed Screw w 1/8" Adapter)	DBC-NPT-ADP/BBS
3	O-ring for Guide Bolt Sleeve (Use for older design)	DBC-MB
4	Rubber Bushing for Guide Bolt Sleeve (Use for current design)	DBC-MHBSB
5	Stainless Steel Sleeve for Guide Bolt	DBC-MHBS
6	Stainless Steel Guide Bolt (M11 x 1.5) w/Thread Locker (5/16" Allen or 1/2" Hex)	DBC-MHGB
7	Adapter Port 90° 1/8" NPT to 3/16" FIF	DBC-FIF-MP-90
8*	2-1/4" Stainless Steel Piston a Kodiak Standard and Exclusive	DBC-225-PSTN-SS
9	Silicone Dust Boot	DBC-225-BOOT-SI
10	Piston Rubber Seal	DBC-225-SEAL

* The Kodiak Piston is the Largest in the Industry for the 3500 LB Axle! It Produces 26% more brake torque than a 2" piston.

8000 LB AXLE

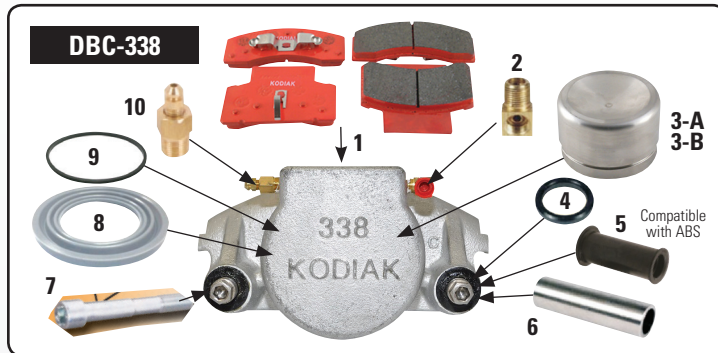


MODEL	YEAR	AXLE	BRAKE PAD #
Buick Century H/D	83-95	Front	MKD-215
Cadillac Deville, Fleetwood	85-90	Front	MKD-215
Oldsmobile Cutlass, Ciera HD	82-97	Front	MKD-215

The list is a partial list of GM cars that can be used as a reference for replacement pads on the Kodiak disc brake caliper.

REFERENCE #	DESCRIPTION	PART #
1-A	Friction Pads (Stainless Steel Backed Ceramic)	DBC-250-PAD-SS
1-B	Friction Pads (Ceramic Standard on E-Coat)	DBC-250-PAD
2	Brass Bleed Port (1/4"-28 Bleed Screw w 1/8" Adapter)	DBC-NPT-ADP/BBS
3	O-ring for Guide Bolt Sleeve (Use for older design)	DBC-MB
4	Rubber Bushing for Guide Bolt Sleeve (Use for current design)	DBC-MHBSB
5	Stainless Steel Sleeve for Guide Bolt	DBC-MHBS
6	Stainless Steel Guide Bolt (M11 x 1.5) w/Thread Locker (5/16" Allen or 1/2" Hex)	DBC-MHGB
7	Adapter Port 90° 1/8" NPT to 3/16" FIF	DBC-FIF-MP-90
8-A	2-1/2" Hardened Steel Piston a Kodiak Standard and Exclusive	DBC-250-PSTN
8-B	2-1/2" Stainless Steel Piston a Kodiak Standard and Exclusive	DBC-250-PSTN-SS
9	Silicone Dust Boot	DBC-250-BOOT-SI
10	Piston Rubber Seal	DBC-250-SEAL

10,000 LB AXLE



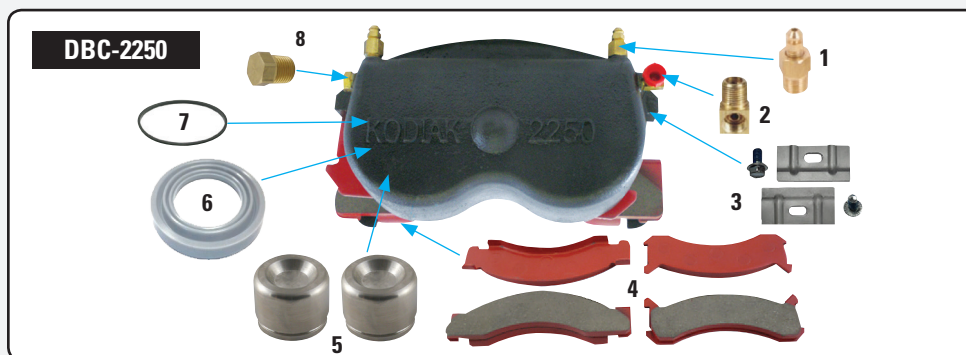
MODEL	YEAR	YEAR	BRAKE PAD #
Chevrolet Van Express G3500	96-03	Front	MKD-459
Chevrolet P/U K30, K3500 4WD	92-01	Front	MKD-459
Chevrolet P/U C30, 3500 2WD	92-00	Front	MKD-459

The list is a partial list of GM cars that can be used as a reference for replacement parts on the Kodiak disc brake caliper.

REFERENCE #	ITEM DESCRIPTION	KODIAK 338 PART #	KODIAK 338 HD PART #
1	Friction Pads (Ceramic Standard on E-Coat)	DBC-338-PAD	DBC-2250-PAD
2	Adapter Port 90° 1/8" NPT to 3/16" FIF	DBC-FIF-MP-90	DBC-FIF-MP-90
3-A	3-3/8" Steel Piston with E-Coat Caliper	DBC-338-PSTN	DBC-338-PSTN
3-B	3-3/8" Stainless Steel Piston with Dacromet Caliper	DBC-338-PSTN-SS	N/A
4	O-ring for Guide Bolt Sleeve (Use for older design)	DBC-MB	N/A
5	Rubber Bushing for Guide Bolt Sleeve (Use for current design)	DBC-338-MHBSB	N/A
6*	Stainless Steel Sleeve for Guide Bolt	DBC-338-MHBS-SS	N/A
7*	Stainless Steel Guide Bolt (M11 x 1.5) w/Thread Locker	DBC-338-MHGB	N/A
8	Silicone Dust Boot	DBC-338-BOOT	DBC-338-BOOT
9	Piston Rubber Seal	DBC-338-SEAL	DBC-338-SEAL
10	Brass Bleed Port (1/4"-28 Bleed Screw w 1/8" Adapter)	DBC-NPT-ADP/BBS	DBC-NPT-ADP/BBS

* If ordering E-Coat Caliper (DBC-338-E) w/Zinc Plated Sleeve, Guide Bolts and Silver Plated Piston

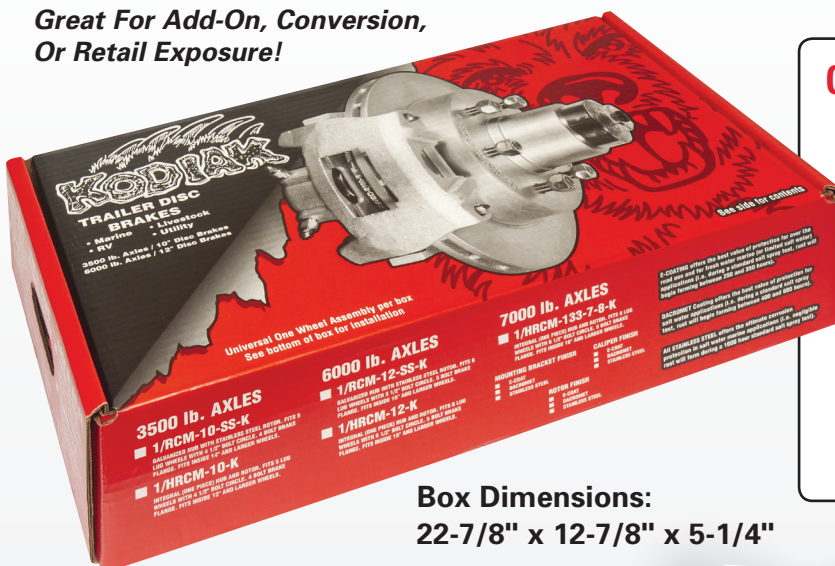
10,000 LB AXLE



REFERENCE #	ITEM DESCRIPTION	QTY	KODIAK PART #
1	Brass Bleed Port (1/4"-28 Bleed Screw w 1/8" Adapter)	2	DBC-NPT-ADP/ABS
2	Adapter Port 90° 1/8" NPT to 3/16" FIF	1	DBC-FIF-MP-90
3	Caliper Retaining Clip With Bolt	2	DBC-HD-CLIP-REPL
4	Friction Pads (Ceramic Standard on E-Coat)	1	DBC-2250-PAD
5	2-1/2" Steel Piston	2	DBC-250-PSTN
6	Silicone Dust Boot	2	DBC-250-BOOT-SI
7	Piston Rubber Seal	2	DBC-250-SEAL
8	Brass 1/8" NPT Plug	1	DBC-NPT-PLUG

CHECK OUT OUR RETAIL BOX PROGRAM FOR 3,500 - 7,000 LB AXLES!

*Great For Add-On, Conversion,
Or Retail Exposure!*



Contents:



Box Dimensions:
22-7/8" x 12-7/8" x 5-1/4"

XL PRO LUBE KITS

Allows a grease only hub to be converted to an oil bath hub.

PART #	DESCRIPTION
XLPROLUBE1980-K	Works on 3500 lb axle, spindle seal area must be O.D. 1.72 (1.68 requires different seal)
XLPROLUBE2440-K	Works on 5200-6000 lb axle, spindle seal area must be O.D. 2.250

NOTE: Contains 2 oil caps, 2 seals, and 1 (8oz.) bottle of oil.

XL-PRO LUBE 1980 KIT



XL-PRO LUBE 2440 KIT



RED EYE PROTECTOR KITS

Easy-to-install bearing protectors form a positive hub seal to keep contaminants out and grease in. One-piece housing and O-ring seals guarantee that grease will not leak.

PART #	DESCRIPTION
REBP1980AC	Fits hubs w/1.980" Inner Dia.
REBP2440AC	Fits hubs w/2.440" Inner Dia.

REBP1980AC



REBP2440AC





DISC BRAKE LIMITED WARRANTY

KODIAK warrants its E-Coat/Dacromet sets against defects in **materials or workmanship** for a period of three (3) years from the date of purchase, and agrees to repair or replace any defective unit without charge.

KODIAK warrants its Kodaguard coated products against defects in **materials or workmanship** for a period of 4 years from the date of purchase, and agrees to repair or replace any defective unit without charge.

KODIAK warrants its **All Stainless Steel Disc Brake** sets against defects in **materials or workmanship** for a period of six (6) years from the date of purchase, and agrees to repair or replace any defective unit without charge.

IMPORTANT: The warranty does not cover damage or loss resulting from **accident, misuse or abuse, lack of reasonable care, corrosion**, the affixing of any attachment not provided with the product, loss of parts, normal wear, or subjecting the product to any but the specified application, **nor does it cover field labor or inbound freight charges**. This warranty is non-transferrable. Furthermore, any and all parts used in an air/hydraulic system will not be covered under this warranty.

NO RESPONSIBILITY IS ASSUMED FOR ANY SPECIAL, INCIDENTAL OR CONSEQUENTIAL DAMAGE.

You may obtain warranty service through your dealer or by (1) calling 800-7KODIAK to obtain a return material authorization number, and (2) by taking or shipping the unit, freight paid, to Kodiak at the address below. **Loss or damage occurring during transit is not covered by this warranty.**

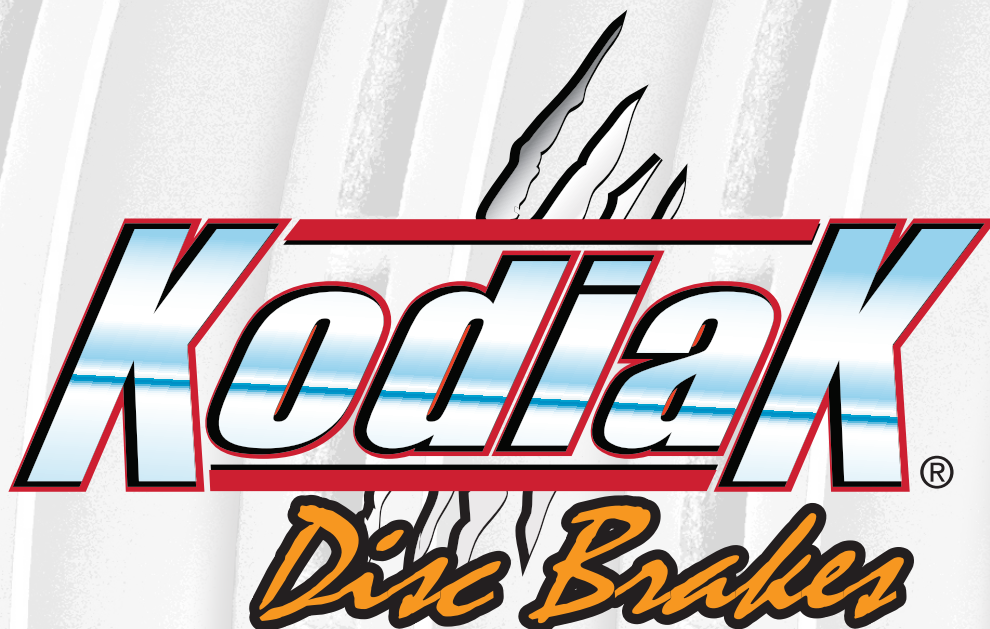
NOTE: No other warranty, written or oral, is authorized by Kodiak.

This warranty gives you specific legal rights, and you may also have other rights which may vary from state to state. Some states do not allow the exclusion or limitation of incidental or consequential damages, so the above exclusion and limitations may not apply to you.

KODIAK TRAILER COMPONENTS

633 NW Parkway • Azle, TX 76020 • 800-7KODIAK

Note: Inspect brake system, including friction pads prior to each use.
Pad wear or rotor damage from excessive pad wear is not covered by product warranty.



DISC BRAKES FOR
MARINE, RV, LIVESTOCK & UTILITY TRAILERS

604 W. Main St., Azle, TX 76020

Phone: 800-7KODIAK • Fax: 817-595-2643

www.kodiaktrailer.com

Email: kodiak@kodiaktrailer.com

